



Exquisitely presented in unimaginable condition, this 7 bedroom family home is a must see. Well proportioned bedrooms, highly finished bathrooms, a well built back garden and a kitchen to rival any home, call now to arrange your exclusive viewing slot. Available immediately.

## Key features

- A TITANIC Terraced House stretching 4 floors
- Exceptional Family Home
- Spacious Bedrooms
- Part Furnished
- Recently Refurbished to an Immaculate Finish
- 3 Piece Bathrooms' across the home
- Excellent Transport Links
- Private Driveway
- Close to Local Amenities
- Available Immediately

Guide Price: £5,000 - £6,000 PCM

### [Virtual Tour](#)

Tastefully presented in pristine condition, this ample terraced house stretches over 4 floors with seven well proportioned bedrooms. Ideally located in Beckton, this is an exceptional family home. There are 4 levels in this house. The master bedroom, a three-piece bathroom, the dining room, the kitchen, and a spacious rear paved garden are all located on the ground level. Two double bedrooms, a living room, and a three-piece bathroom with a shower are all located on the first floor. Two double bedrooms and a three-piece bathroom with a bathtub are located on the second level. The left houses the final two bedrooms. This building enjoys





7 3 1 1

Garnet Walk, Beckton, London E6

ESTATEOLOGY

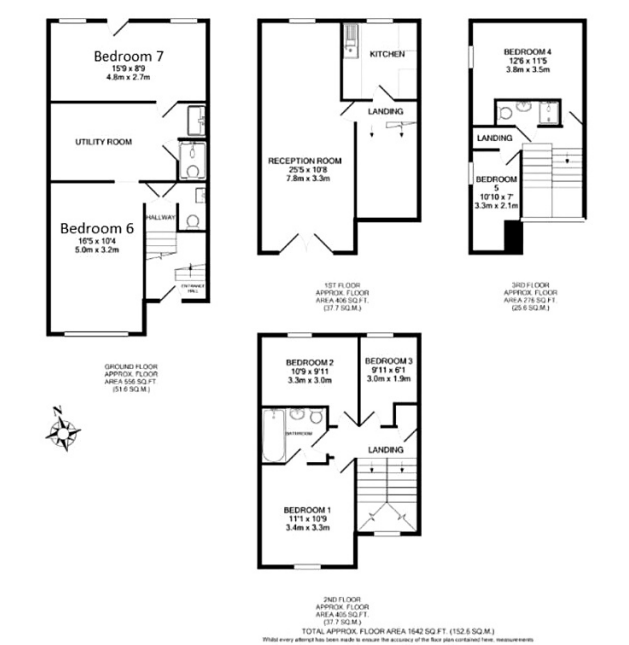
020 3422 2333 020 3422 2333

hello@estateology.com

- 25 Roman Road, Bethnal Green, London, E2 0HU
- 29th Floor, One Canada Square, Canary Wharf, London, E14 5DY

© 2024 Estateology Company registration no. 9628198. Registered office: 555-557 Cranbrook Road, Gants Hill, Ilford, Essex, IG2 6HE

We have prepared these property particulars as a general guide to a broad description of the property. They are not intended to constitute part of an offer or contract. We have not carried out a structural survey and the services, appliances and specific fittings have not been tested. All photographs, measurements, floorplans and distances referred to are given as a guide only and should not be relied upon for the purchase of carpets or any other fixtures or fittings. Lease details, service charges and ground rent (where applicable) and council tax are given as a guide only and should be checked and confirmed by your Solicitor prior to exchange of contracts. The copyright of all details, photographs and floorplans remain exclusive to Estateology.



Score	Energy rating	Current	Potential
92+	A		
81-91	B		
69-80	C		80   c
55-68	D	67   d	
39-54	E		
21-38	F		
1-20	G		