



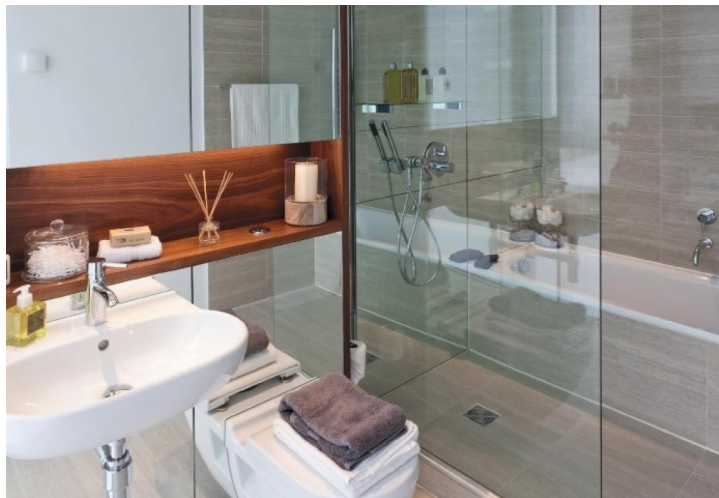
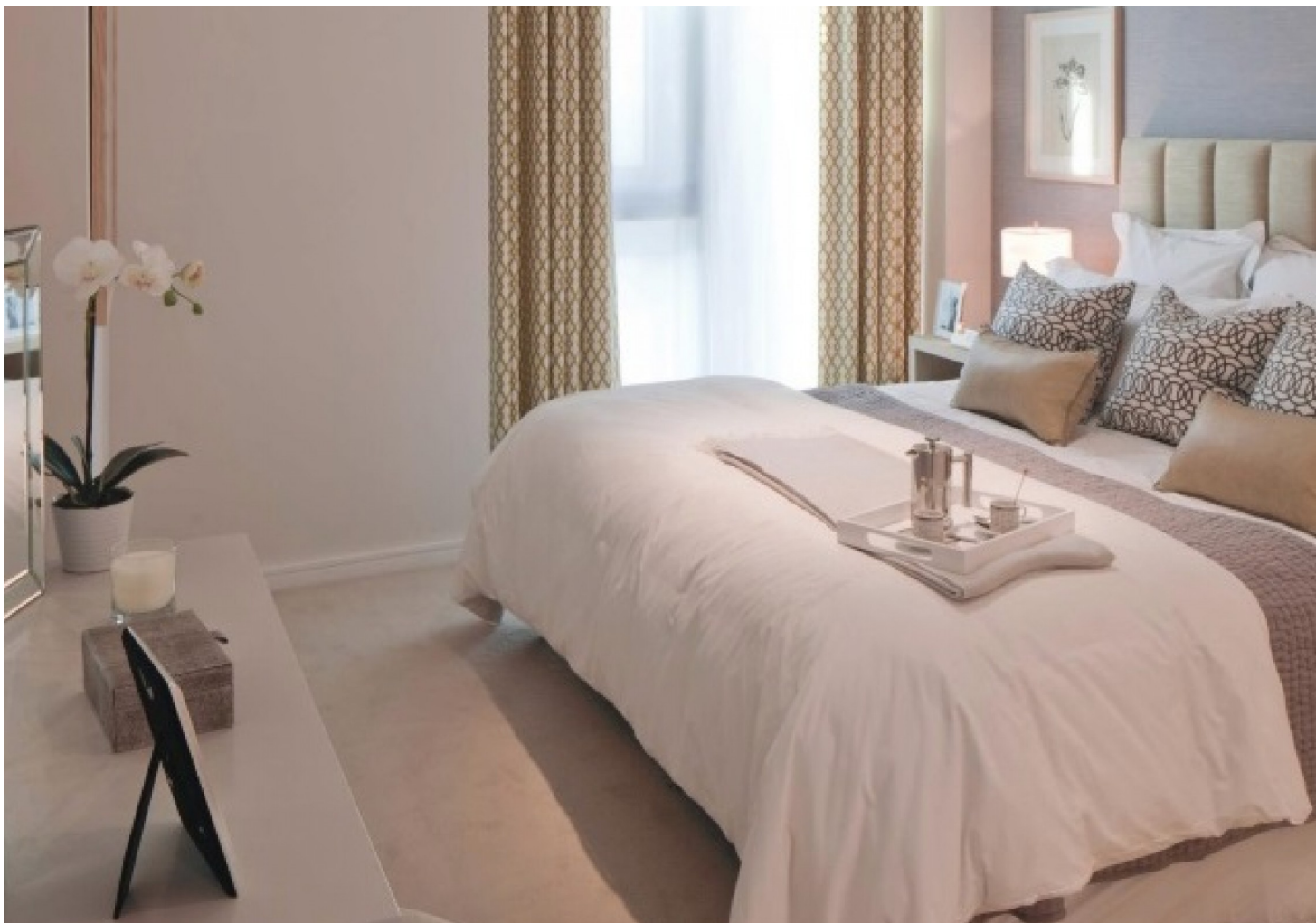
ESTATEOLOGY

Camberwell on the Green, London, SE5

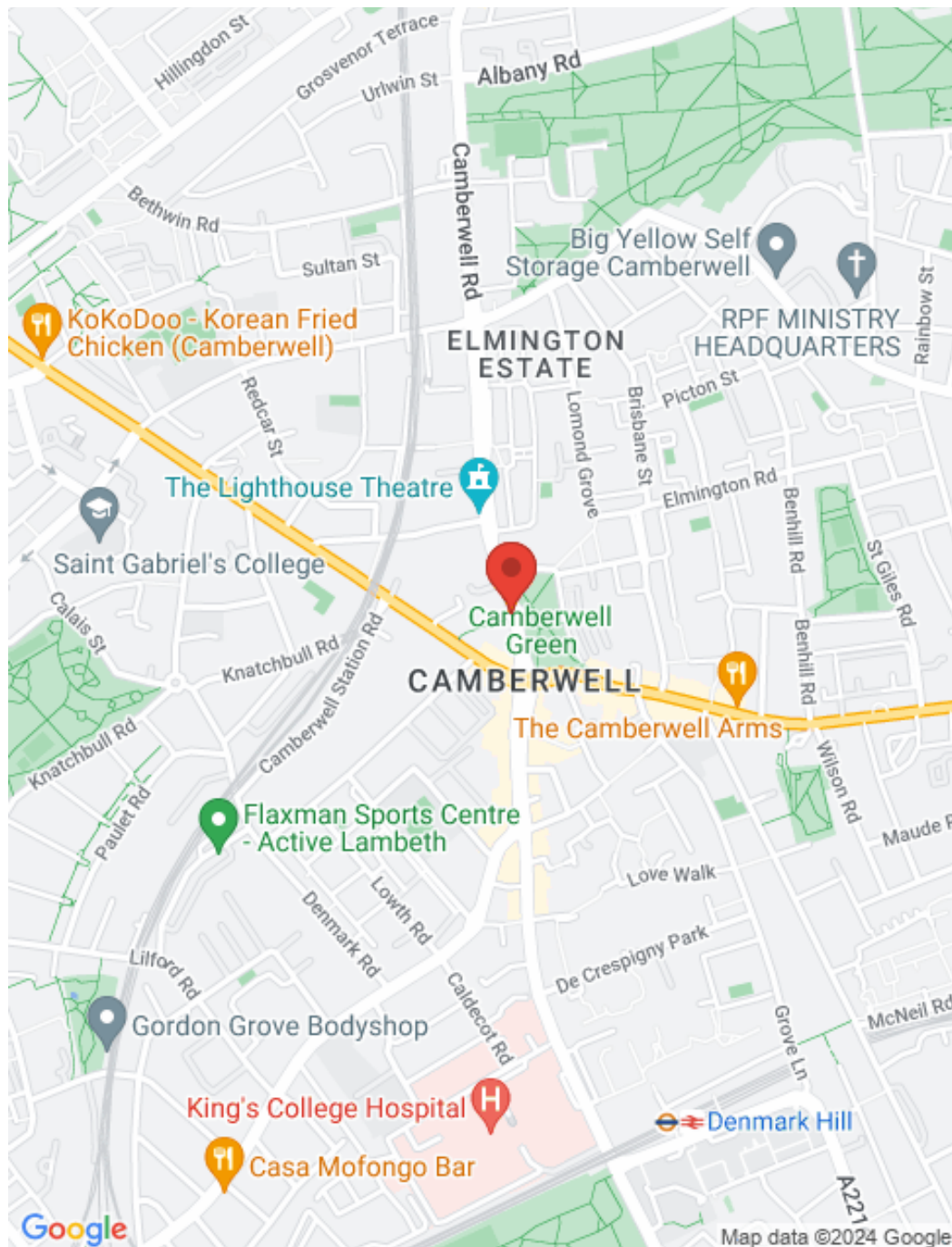
Guide Price- £630,000- £665,000

2 1









## Key features

Sophisticated city living has arrived in Camberwell. Stunning two bedroom apartment on the second floor boasting a total space of 861 Sqft. Located in the heart of South East England. Show flats available. Call now to arrange a viewing!

- 2 Bedroom
- Completion Q4 2016
- Access To Key Central London Locations In Under 25 mins
- 861 Sqft
- 999 Year Lease
- Shared Podium Garden
- Cycle Parking
- Stunning Views



☎ 020 3422 2333    ☎ 020 3095 2333

✉ [hello@estateology.com](mailto:hello@estateology.com)

📍 25 Roman Road, Bethnal Green, London, E2 0HU

📍 29th Floor, One Canada Square, Canary Wharf, London, E14 5DY

© 2024 Estateology Company registration no. 9628198. Registered office: 555-557 Cranbrook Road, Gants Hill, Ilford, Essex, IG2 6HE

We have prepared these property particulars as a general guide to a broad description of the property. They are not intended to constitute part of an offer or contract. We have not carried out a structural survey and the services, appliances and specific fittings have not been tested. All photographs, measurements, floorplans and distances referred to are given as a guide only and should not be relied upon for the purchase of carpets or any other fixtures or fittings. Lease details, service charges and ground rent (where applicable) and council tax are given as a guide only and should be checked and confirmed by your Solicitor prior to exchange of contracts. The copyright of all details, photographs and floorplans remain exclusive to Estateology.