

Guide Price: £1,600 - £1,850 PCM. Spacious 2 bedroom family house with modern fitted kitchen and lounge/diner a 3 piece bathroom and a separate WC. Good transport links to Barking Station C2C allows easy access to Canary Wharf and the City. Early viewings advised.

Key features

- 2 bedroom house
- Unfurnished
- Spacious Lounge
- Fitted Kitchen
- Three-piece bathroom / Sep WC
- Off Street Parking
- Rear Garden
- Upney / Barking (District Line) Underground Station
- Close to Local Amenities, Available End of September

Guide Price: £1,600 - £1,850 PCM



[Virtual Tour](#)

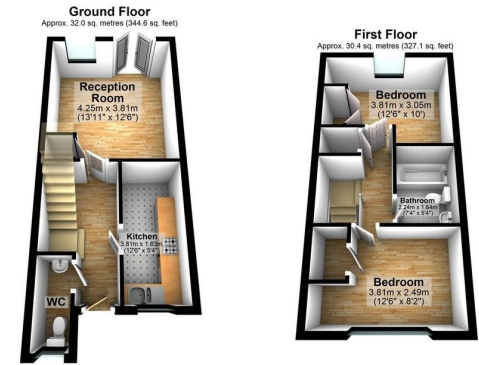
This spacious 2-bedroom terraced house has a lot to offer. A short walk from local shops and schools. The property has been well maintained and comprises a spacious bright and airy lounge with large double glazed doors allowing an abundance of light leading to a well-maintained good-sized garden, further benefits include 2 good-sized double bedrooms and the three-piece bathroom suite is in a good condition. The house has a good size outdoor space to the rear and the property further benefits from off-street parking for 1 car.

In close proximity to the property, there are local amenities, a health center, primary and secondary schools within walking distance and a short

Galleons Drive, Barking, Essex IG11

Guide Price: £1,600 - £1,850 PCM

 2  1  1  1



Total area: approx. 62.4 sq. metres (671.7 sq. feet)



2 1 1 1

Galleons Drive, Barking, Essex IG11

020 3422 2333 020 3422 2333

hello@estateology.com

25 Roman Road, Bethnal Green, London, E2 0HU

29th Floor, One Canada Square, Canary Wharf, London, E14 5DY

© 2024 Estateology Company registration no. 9628198. Registered office: 555-557 Cranbrook Road, Gants Hill, Ilford, Essex, IG2 6HE

We have prepared these property particulars as a general guide to a broad description of the property. They are not intended to constitute part of an offer or contract. We have not carried out a structural survey and the services, appliances and specific fittings have not been tested. All photographs, measurements, floorplans and distances referred to are given as a guide only and should not be relied upon for the purchase of carpets or any other fixtures or fittings. Lease details, service charges and ground rent (where applicable) and council tax are given as a guide only and should be checked and confirmed by your Solicitor prior to exchange of contracts. The copyright of all details, photographs and floorplans remain exclusive to Estateology.