



Guide Price: £500 - £750 PCM. Single bedroom with an en suite, a shared kitchen and dining area, and access to a shared garden in a 5 bedroom HMO, situated near Canning Town DLR. Excellent transport links with the A13 and A12 being easily accessible. Available from 1st January. Call now to arrange your viewing.

Key features

- En Suite 3 piece Shower room
- Communal Kitchen
- Shared Garden
- Rear Aspect Kitchen
- Excellent Transport Links
- A13 and A12 Nearby
- Available 1st January

Guide Price: £500 - £750 PCM

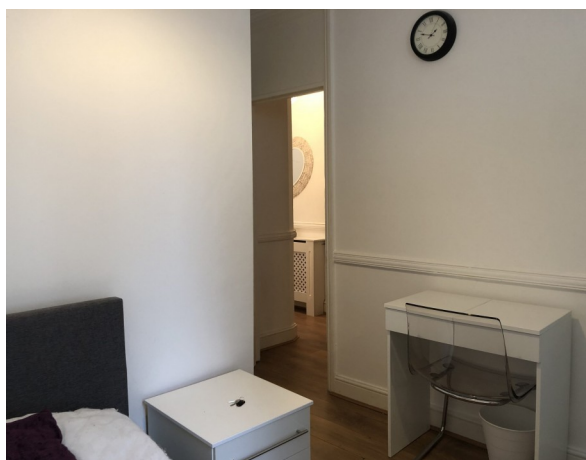
Room to let within this 5 bedroom house, a single bedroom, furnished with a two-door wardrobe. Front aspect double - glazed bay window and radiator. The fully tiled en suite shower room has a shower enclosure, washbasin, and low-level WC. Available from 1st January.

Well situated for Canning Town DLR with easy access to the City and West end, also with the A13 and A12 being easily accessible. This property is within walking distance from a host of local convenience stores, restaurants, and bars.

Bedroom:

Single bed, a two-door wardrobe, laminate flooring, desk space, double glazed windows, and various power points

En suite:





1 1 1 1

Oban Street, Poplar, London

ESTATEOLOGY

020 3422 2333 020 3422 2333

hello@estateology.com

- 25 Roman Road, Bethnal Green, London, E2 0HU
- 29th Floor, One Canada Square, Canary Wharf, London, E14 5DY

© 2024 Estateology Company registration no. 9628198. Registered office: 555-557 Cranbrook Road, Gants Hill, Ilford, Essex, IG2 6HE

We have prepared these property particulars as a general guide to a broad description of the property. They are not intended to constitute part of an offer or contract. We have not carried out a structural survey and the services, appliances and specific fittings have not been tested. All photographs, measurements, floorplans and distances referred to are given as a guide only and should not be relied upon for the purchase of carpets or any other fixtures or fittings. Lease details, service charges and ground rent (where applicable) and council tax are given as a guide only and should be checked and confirmed by your Solicitor prior to exchange of contracts. The copyright of all details, photographs and floorplans remain exclusive to Estateology.