



ESTATEOLOGY

Brimsdown House, Devas Street, Bow, London, E3

Guide Price: £175,000 - £200,000 L/H







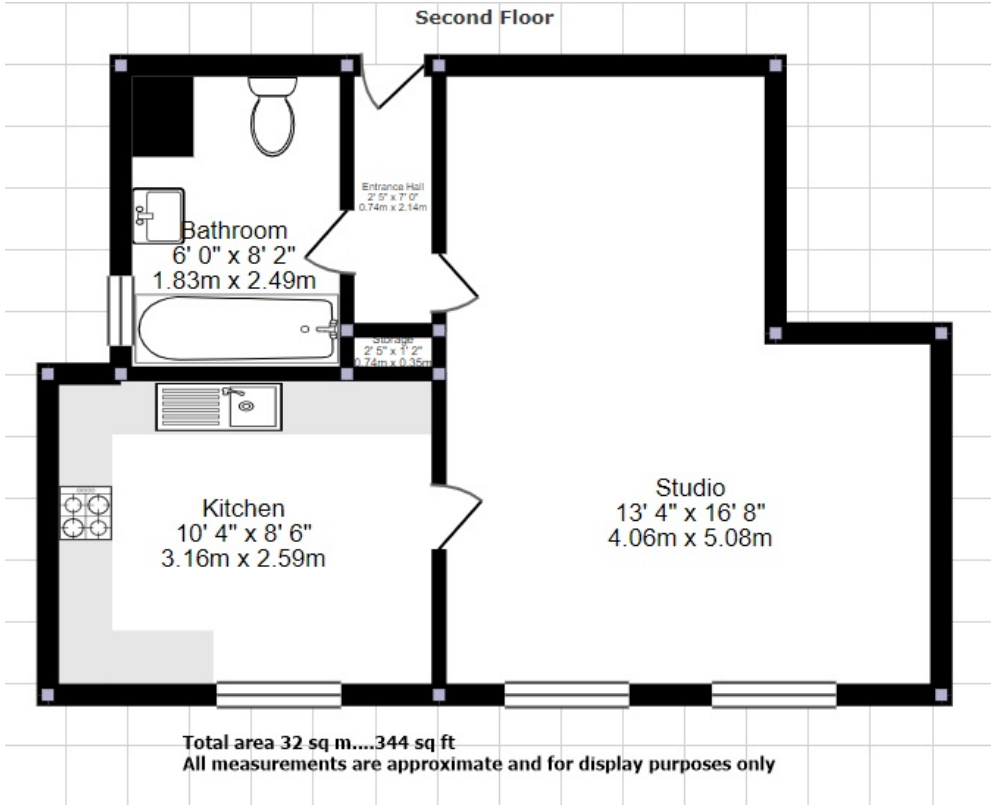
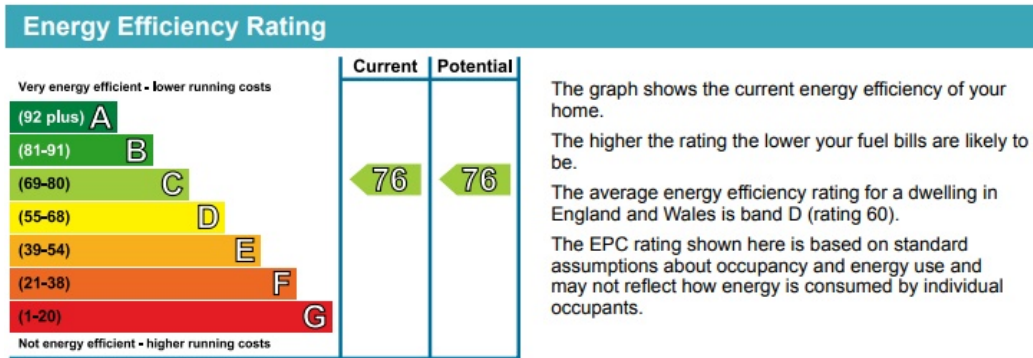




## Key features

STUDIO BY NAME, ONE BEDROOM BY SIZE ! Spacious studio flat which (subject to planning permission) can be converted to a 1 bedroom flat. Walking distance to Devons Road DLR and Bromley by Bow stations, making it ideal for working professionals looking for a short commute to Canary Wharf, Stratford and The City. This Studio further benefits from separate three piece bathroom suite and a separate fitted kitchen. Call now to arrange your exclusive viewing slot.

- Studio Flat
- Separate 3 Piece Suite
- Separate Kitchen
- Close to Amenities
- Bright Interiors
- Devons Road DLR
- Bromley by Bow Station



# ESTATEOLOGY

☎ 020 3422 2333 ☎ 020 3095 2333

✉ hello@estateology.com

📍 25 Roman Road, Bethnal Green, London, E2 0HU

📍 29th Floor, One Canada Square, Canary Wharf, London, E14 5DY

© 2024 Estateology Company registration no. 9628198. Registered office: 555-557 Cranbrook Road, Gants Hill, Ilford, Essex, IG2 6HE

We have prepared these property particulars as a general guide to a broad description of the property. They are not intended to constitute part of an offer or contract. We have not carried out a structural survey and the services, appliances and specific fittings have not been tested. All photographs, measurements, floorplans and distances referred to are given as a guide only and should not be relied upon for the purchase of carpets or any other fixtures or fittings. Lease details, service charges and ground rent (where applicable) and council tax are given as a guide only and should be checked and confirmed by your Solicitor prior to exchange of contracts. The copyright of all details, photographs and floorplans remain exclusive to Estateology.