



Ada House, Ada Place, Bethnal Green, London E2

Guide Price: £650,000 - £700,000 L/H.

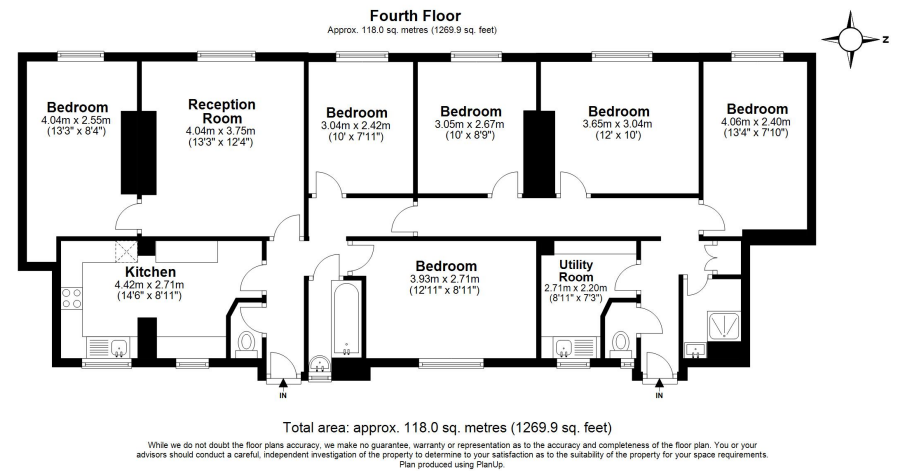
6 2



Key features

PLENTY OF ROOMS !!! Surprisingly large six bedroom apartment arranged over 1,269 square feet within this 1930's built block. Close to local amenities, serving the trendy bars and restaurants of Hoxton, Shoreditch and London Fields. Excellent transport links with London Fields moments within walking distance. Call now to book your exclusive viewing slot.

- Six bedrooms
- Spacious Living Room
- Two Bathrooms
- Fitted Kitchen / Diner
- Excellent transport links
- Close to local amenities
- Victoria Park
- London Fields Station



☎ 020 3422 2333 ☎ 020 3095 2333

✉ hello@estateology.com

📍 25 Roman Road, Bethnal Green, London, E2 0HU

📍 29th Floor, One Canada Square, Canary Wharf, London, E14 5DY

© 2025 Estateology Company registration no. 9628198. Registered office: 555-557 Cranbrook Road, Gants Hill, Ilford, Essex, IG2 6HE

We have prepared these property particulars as a general guide to a broad description of the property. They are not intended to constitute part of an offer or contract. We have not carried out a structural survey and the services, appliances and specific fittings have not been tested. All photographs, measurements, floorplans and distances referred to are given as a guide only and should not be relied upon for the purchase of carpets or any other fixtures or fittings. Lease details, service charges and ground rent (where applicable) and council tax are given as a guide only and should be checked and confirmed by your Solicitor prior to exchange of contracts. The copyright of all details, photographs and floorplans remain exclusive to Estateology.