

Guide Price: £1,900 - £2,300 PCM. LOCATION, LOCATION, LOCATION !!! Charming four bedroom (NO LOUNGE) ground floor apartment with kitchen large enough to dine in and outdoor space. Close to local amenities with excellent transport links. Situated in Hollybush Gardens, moments from Bethnal Green Station. Ideal for sharers and commuters alike. Call now to book your exclusive viewing slot.

Key features

- Four bedrooms
- NO LOUNGE
- Private Garden
- Fitted Kitchen / Diner
- Excellent transport links
- Close to local amenities
- Bethnal Green Park
- Bethnal Green Tube

Guide Price: £1,900 - £2,300 PCM

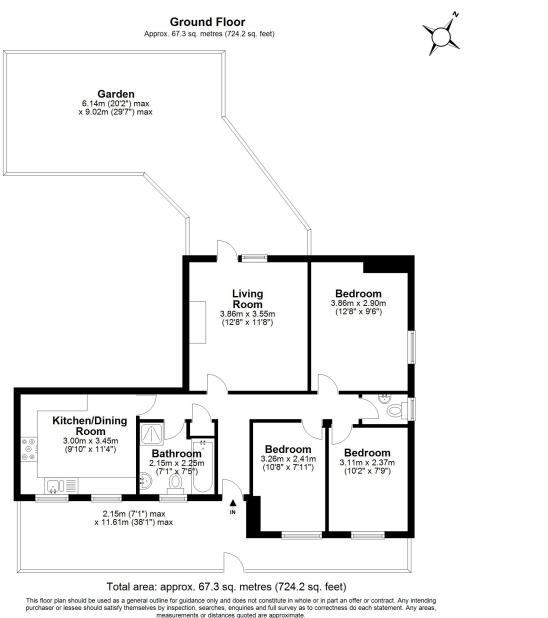
Located in one of London's most sought after postcodes is this spacious four bedroom apartment (NO LOUNGE) on the ground floor of this purpose built block. Located moments away from Bethnal Green (Central Line) Underground tube station, this bright and airy property with neutral decor throughout comprises a fitted kitchen large enough to dine in, three piece bathroom and separate WC, private outdoor space, double glazed windows and wood laminate flooring throughout.

Bethnal Green Road and Roman Road markets are nearby, Columbia Road is moments away which is home not only to the famous flower market but also a plethora of fine bars and restaurants including Brown

Hollybush House, Hollybush Gardens, Bethnal Green,

Guide Price: £1,900 - £2,300 PCM
London E2

 4  2  1



4 2 1 1

Hollybush House, Hollybush Gardens, Bethnal Green, London E2

020 3422 2333 020 3422 2333

hello@estateology.com

- 25 Roman Road, Bethnal Green, London, E2 0HU
- 29th Floor, One Canada Square, Canary Wharf, London, E14 5DY

© 2024 Estateology Company registration no. 9628198. Registered office: 555-557 Cranbrook Road, Gants Hill, Ilford, Essex, IG2 6HE

We have prepared these property particulars as a general guide to a broad description of the property. They are not intended to constitute part of an offer or contract. We have not carried out a structural survey and the services, appliances and specific fittings have not been tested. All photographs, measurements, floorplans and distances referred to are given as a guide only and should not be relied upon for the purchase of carpets or any other fixtures or fittings. Lease details, service charges and ground rent (where applicable) and council tax are given as a guide only and should be checked and confirmed by your Solicitor prior to exchange of contracts. The copyright of all details, photographs and floorplans remain exclusive to Estateology.

