



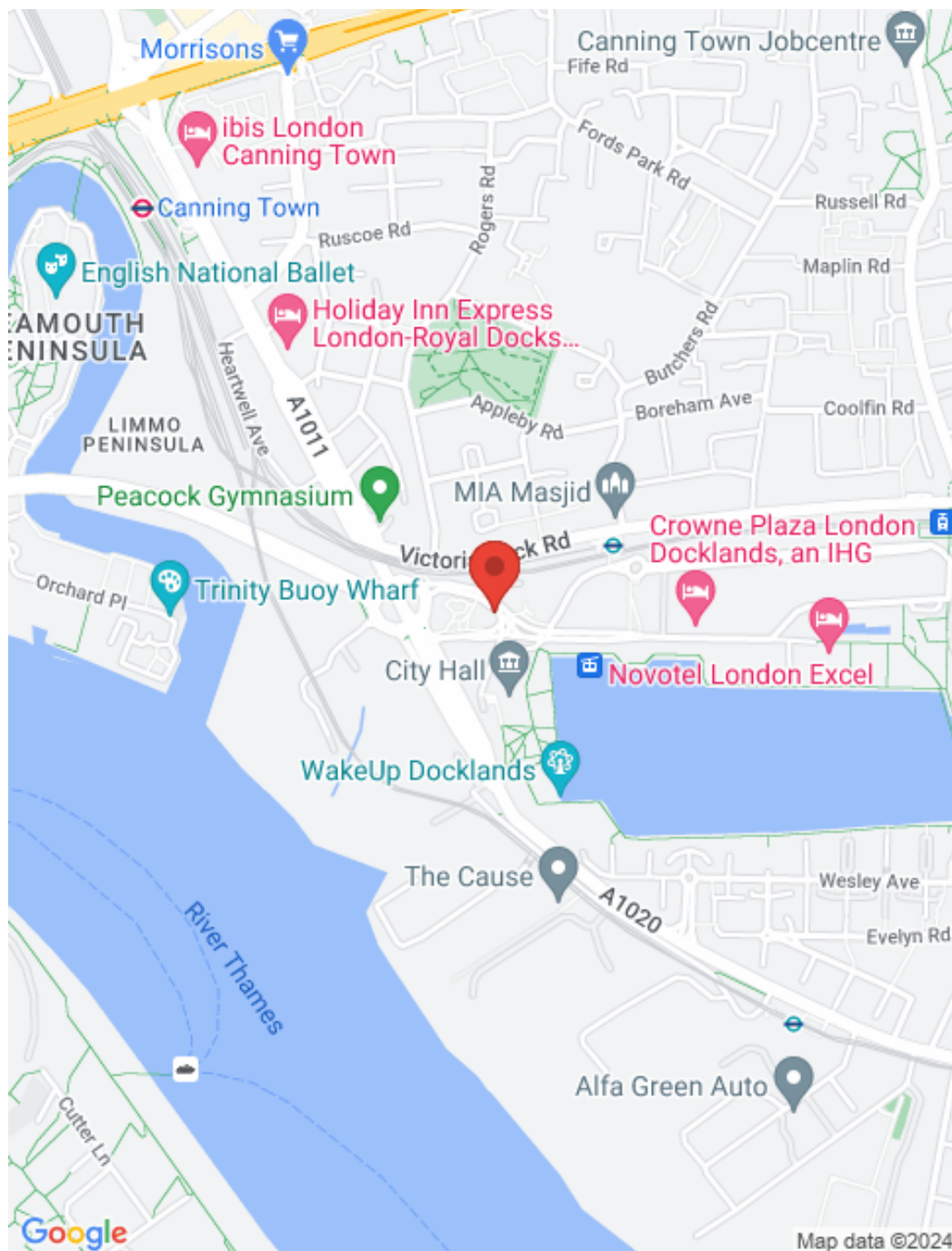
ESTATEOLOGY

 ESTATEOLOGY

Hoola Building, Tidal Basin Road, Royal Victoria Docks,

Guide Price £525,000 - £575,000
London, E16

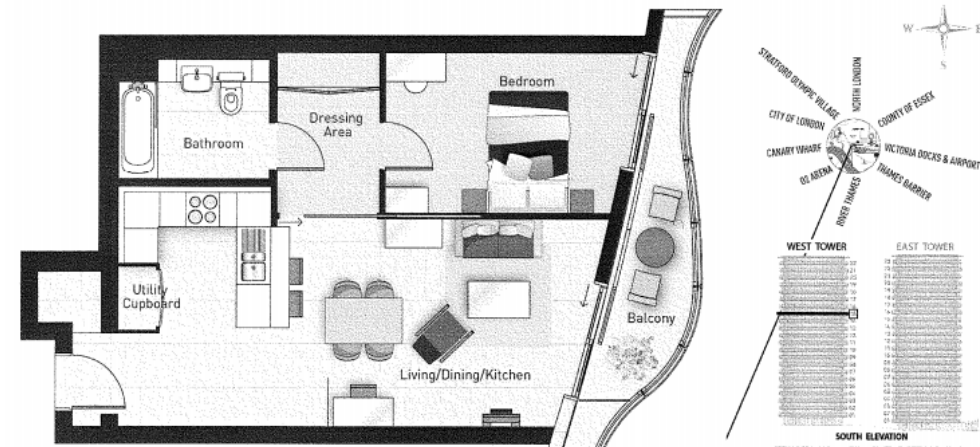
 1  1



Key features

Extremely spacious 1 bedroom flat boasting a total space of 689 sqft in this stunning development. With a Type 6B layout and located on the 14th floor of the West Tower, it comes with a private balcony with exceptional views of Royal Victoria Dock and Emirates cable airline.

- Completion Q4 2016
- 999 Year Lease
- Concierge Services
- Residents Lounge
- Gym
- 689 Sqft
- Type 6B
- 14th Floor
- Royal Victoria DLR



ESTATEOLOGY

☎ 020 3422 2333 ☎ 020 3095 2333

✉ hello@estateology.com

📍 25 Roman Road, Bethnal Green, London, E2 0HU

📍 29th Floor, One Canada Square, Canary Wharf, London, E14 5DY

© 2024 Estateology Company registration no. 9628198. Registered office: 555-557 Cranbrook Road, Gants Hill, Ilford, Essex, IG2 6HE

We have prepared these property particulars as a general guide to a broad description of the property. They are not intended to constitute part of an offer or contract. We have not carried out a structural survey and the services, appliances and specific fittings have not been tested. All photographs, measurements, floorplans and distances referred to are given as a guide only and should not be relied upon for the purchase of carpets or any other fixtures or fittings. Lease details, service charges and ground rent (where applicable) and council tax are given as a guide only and should be checked and confirmed by your Solicitor prior to exchange of contracts. The copyright of all details, photographs and floorplans remain exclusive to Estateology.