



ESTATEOLOGY

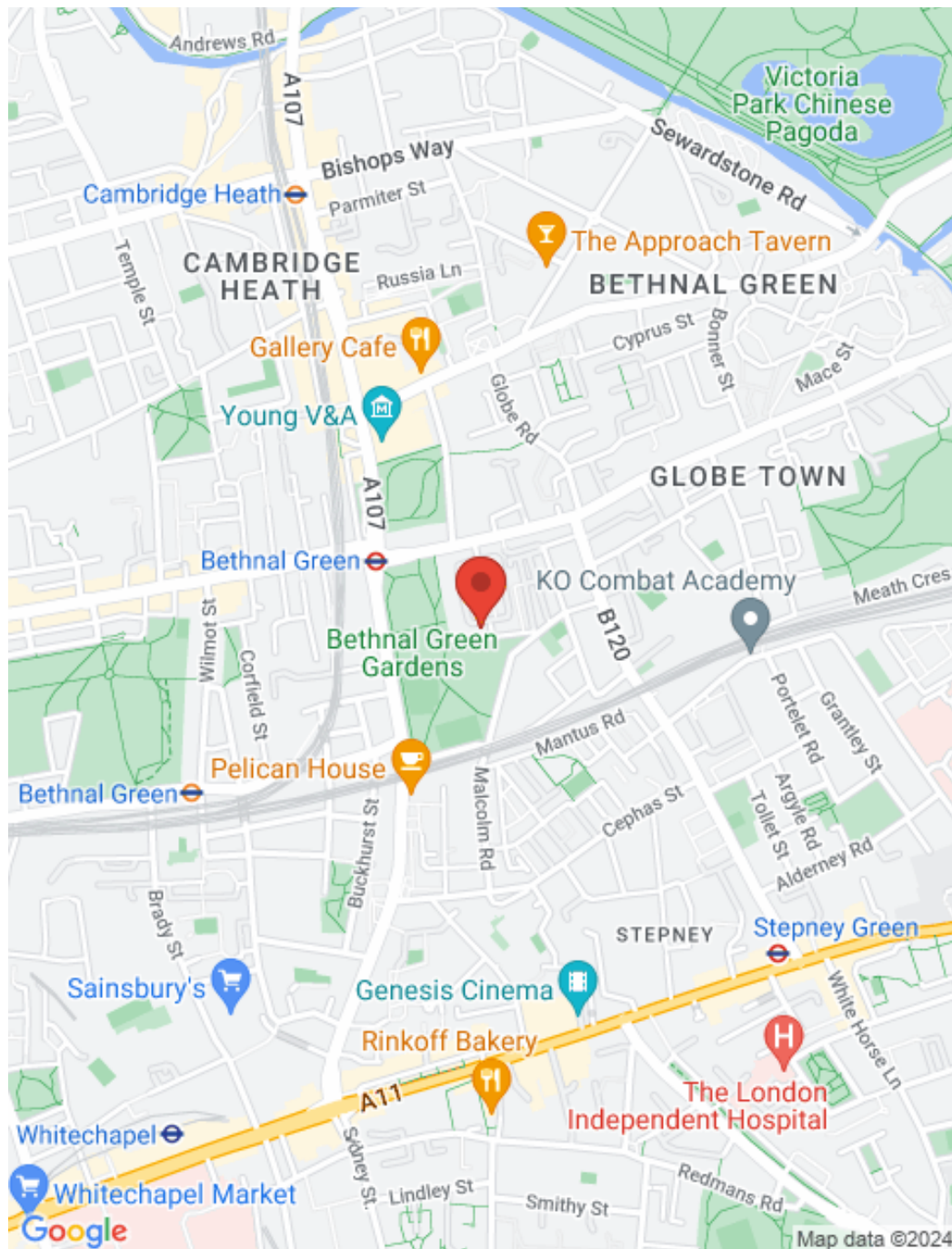
Burns House, Cornwall Avenue, Bethnal Green, London

Guide Price: £450,000 - £500,000

3 1

2 1





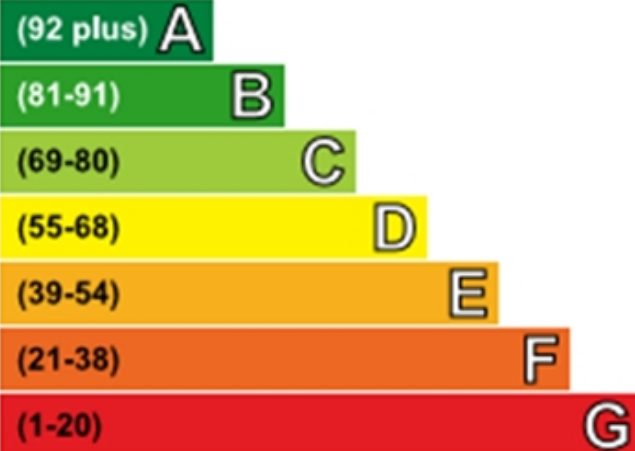
## Key features

Charming three bedroom ground floor apartment in this 1930s mansion block with outdoor space. Close to local amenities with excellent transport links. Situated on Cornwall Avenue, moments from Bethnal Green Station. Ideal for first time buyers or investors alike. Call now for a viewing.

- Three bedrooms
- 1930's Purpose Built Block
- Spacious Living Room
- South Facing Outdoor Space
- Fitted Kitchen / Diner
- Excellent Transport Links
- Close to local amenities
- Bethnal Green Underground Station (Central Line)

## Energy Efficiency Rating

Very energy efficient - lower running costs



Not energy efficient - higher running costs

Current	Potential
64	76

# ESTATEOLOGY

☎ 020 3422 2333 ☎ 020 3095 2333

✉ hello@estateology.com

📍 25 Roman Road, Bethnal Green, London, E2 0HU

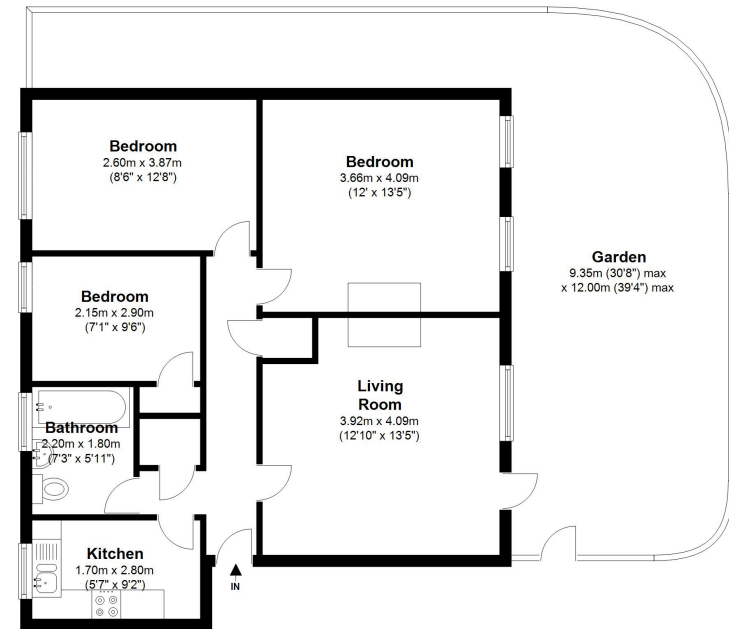
📍 29th Floor, One Canada Square, Canary Wharf, London, E14 5DY

© 2024 Estateology Company registration no. 9628198. Registered office: 555-557 Cranbrook Road, Gants Hill, Ilford, Essex, IG2 6HE

We have prepared these property particulars as a general guide to a broad description of the property. They are not intended to constitute part of an offer or contract. We have not carried out a structural survey and the services, appliances and specific fittings have not been tested. All photographs, measurements, floorplans and distances referred to are given as a guide only and should not be relied upon for the purchase of carpets or any other fixtures or fittings. Lease details, service charges and ground rent (where applicable) and council tax are given as a guide only and should be checked and confirmed by your Solicitor prior to exchange of contracts. The copyright of all details, photographs and floorplans remain exclusive to Estateology.

### Ground Floor

Approx. 65.7 sq. metres (707.5 sq. feet)



Total area: approx. 65.7 sq. metres (707.5 sq. feet)

This floor plan should be used as a general outline for guidance only and does not constitute in whole or in part an offer or contract. Any intending purchaser or lessee should satisfy themselves by inspection, searches, enquiries and full survey as to correctness of each statement. Any areas, measurements or distances quoted are approximate.