

Guide Price: £2,650 - £3,250 PCM Boasting a great location to local amenities, this lovely three-bedroom duplex apartment offers good views, bright and airy interiors throughout, combined with well-proportioned rooms to match. Ideal property for City workers or professional sharers alike. Available from the 3rd of April. Call now to arrange your exclusive viewing slot.

Key features

- Ideal for City Workers or Professional Sharers
- Furnished
- Cambridge Heath (TFL Line) Station
- Move in date to be confirmed
- Three Double Bedrooms
- Spacious Open Plan Living Room
- Modern Open Plan Fitted Kitchen
- Three Piece Bathroom / Separate WC
- Second Floor / Third floor / 2 Balcony
- Superb Transport Links

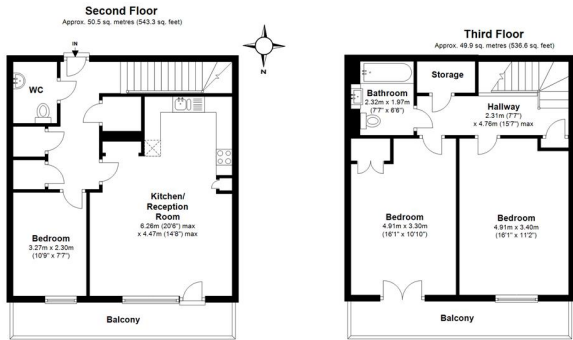
Guide Price: £2,650 - £3,250 PCM

Situated on the second and third floor within a modern block, is this lovely, spacious three double bedroom apartment located on a tree lined street only moments away from Cambridge Heath Overground Station and Bethnal Green Underground Tube Station (Central Line) . Offered in good decorative order throughout, this property boasts a very spacious open plan living / kitchen, three double sized bedrooms, a modern fitted kitchen and a 3 piece bathroom suite with separate WC. The third floor has two very spacious double rooms, a three piece family bathroom and

Jacquard Court, Bishops Way, London, E2

Guide Price: £2,650 - £3,250 PCM

 3  2  1



Total area: approx. 100.3 sq. metres (1080.0 sq. feet)

While we do not doubt the floor plans accuracy, we make no guarantee, warranty or representation as to the accuracy and completeness of the floor plan. You or your advisors should conduct a careful, independent investigation of the property to determine to your satisfaction as to the suitability of the property for your space requirements.
Plan produced using PlanUp.



3 2 1 1

Jacquard Court, Bishops Way, London, E2

020 3422 2333 020 3422 2333

hello@estateology.com

25 Roman Road, Bethnal Green, London, E2 0HU

29th Floor, One Canada Square, Canary Wharf, London, E14 5DY

© 2024 Estateology Company registration no. 9628198. Registered office: 555-557 Cranbrook Road, Gants Hill, Ilford, Essex, IG2 6HE

We have prepared these property particulars as a general guide to a broad description of the property. They are not intended to constitute part of an offer or contract. We have not carried out a structural survey and the services, appliances and specific fittings have not been tested. All photographs, measurements, floorplans and distances referred to are given as a guide only and should not be relied upon for the purchase of carpets or any other fixtures or fittings. Lease details, service charges and ground rent (where applicable) and council tax are given as a guide only and should be checked and confirmed by your Solicitor prior to exchange of contracts. The copyright of all details, photographs and floorplans remain exclusive to Estateology.