

A superb two bedroom two bathroom river facing sub penthouse set on the 7th floor in the sought after Burrells Wharf Square development, with stunning views over the Thames and beyond from its large private terrace, great for al fresco dining. Call now to arrange a viewing.

## Key features

- Two Bedrooms / Two Bathrooms
- Sub Penthouse
- Wrap around Terrace
- Minutes to DLR
- Excellent Condition
- Part Furnished
- Secure Parking
- Concierge
- Gymnasium / Swimming Pool
- Available Immediately

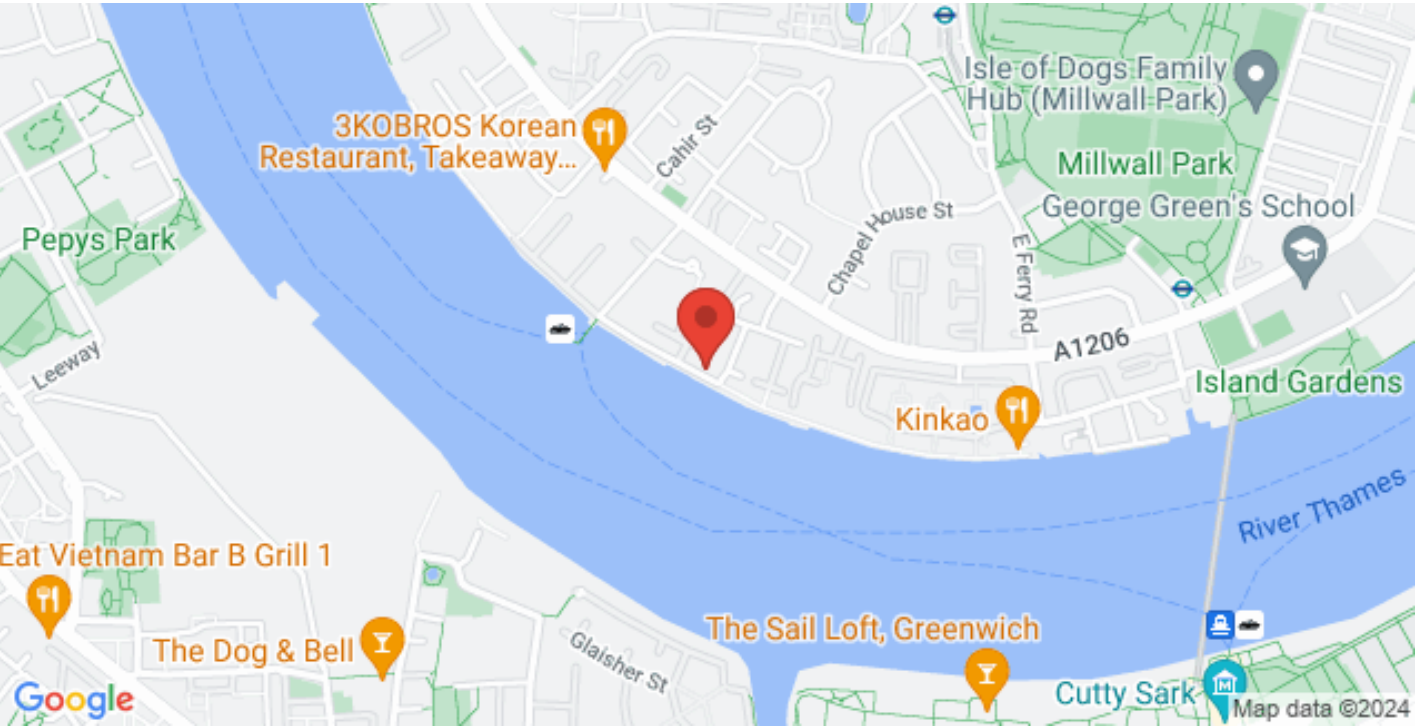
Guide Price: £1,900 - £2,200 PCM

Chart House is situated just a short stroll from both Mudchute and Island Gardens DLR and makes for an easy commute into the City, for a more scenic way to travel, the Thames Clipper riverboat service offers a luxurious but affordable commute to central London. With Masthouse pier only 100 metres away from Burrells Wharf itself, it is by far the quickest and most convenient way to travel and despite becoming increasingly popular, still remains one of the best travel secrets in the city! The apartment is also well placed for the vast array of bars, restaurants and shopping that Canary Wharf has to offer, while the nearby Thames pedestrian foot tunnel means that you can be in the heart of Greenwich in

# Chart House, Burrells Wharf Square, London E14

Guide Price: £1,900 - £2,200 PCM

 2  2  1  1



2 2 1 1

## Chart House, Burrells Wharf Square, London E14

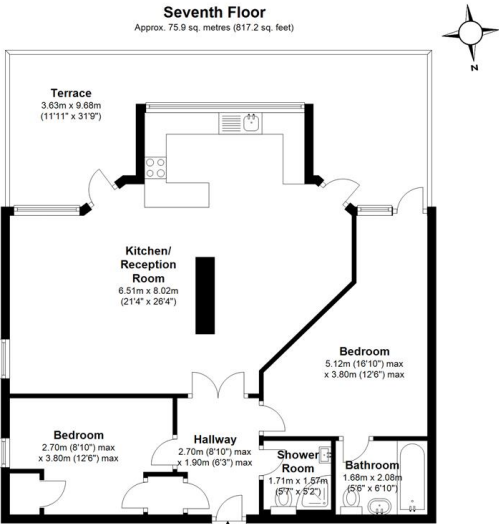
020 3422 2333 020 3422 2333

hello@estateology.com

- 25 Roman Road, Bethnal Green, London, E2 0HU
- 29th Floor, One Canada Square, Canary Wharf, London, E14 5DY

© 2024 Estateology Company registration no. 9628198. Registered office: 555-557 Cranbrook Road, Gants Hill, Ilford, Essex, IG2 6HE

We have prepared these property particulars as a general guide to a broad description of the property. They are not intended to constitute part of an offer or contract. We have not carried out a structural survey and the services, appliances and specific fittings have not been tested. All photographs, measurements, floorplans and distances referred to are given as a guide only and should not be relied upon for the purchase of carpets or any other fixtures or fittings. Lease details, service charges and ground rent (where applicable) and council tax are given as a guide only and should be checked and confirmed by your Solicitor prior to exchange of contracts. The copyright of all details, photographs and floorplans remain exclusive to Estateology.



Total area: approx. 75.9 sq. metres (817.2 sq. feet)

While we do not doubt the floor plans accuracy, we make no guarantee, warranty or representation as to the accuracy and completeness of the floor plan. You or your advisors should conduct a careful, independent investigation of the property to determine to your satisfaction as to the suitability of the property for your space requirements.

Plan produced using PlanUp.

