

Lovely, spacious two bed, two bath apartment located within a popular development moments from Chadwell Heath Station (part of the Crossrail project) and local amenities. A property which must be seen to be fully appreciated. Call today to arrange a viewing.

## Key features

- Two Bed/ Two Bath Apartment
- Spacious Lounge
- Separate Fitted Kitchen
- Family Bathroom
- En-Suite
- Neutral Decor Throughout
- Allocated Parking Space
- 24hr Superstore
- Unfurnished
- Available Now

Guide Price: £1,150 - £1,350 PCM.





Spacious, well appointed two double bedroom apartment forming part of a private residential development within the heart of Chadwell Heath.

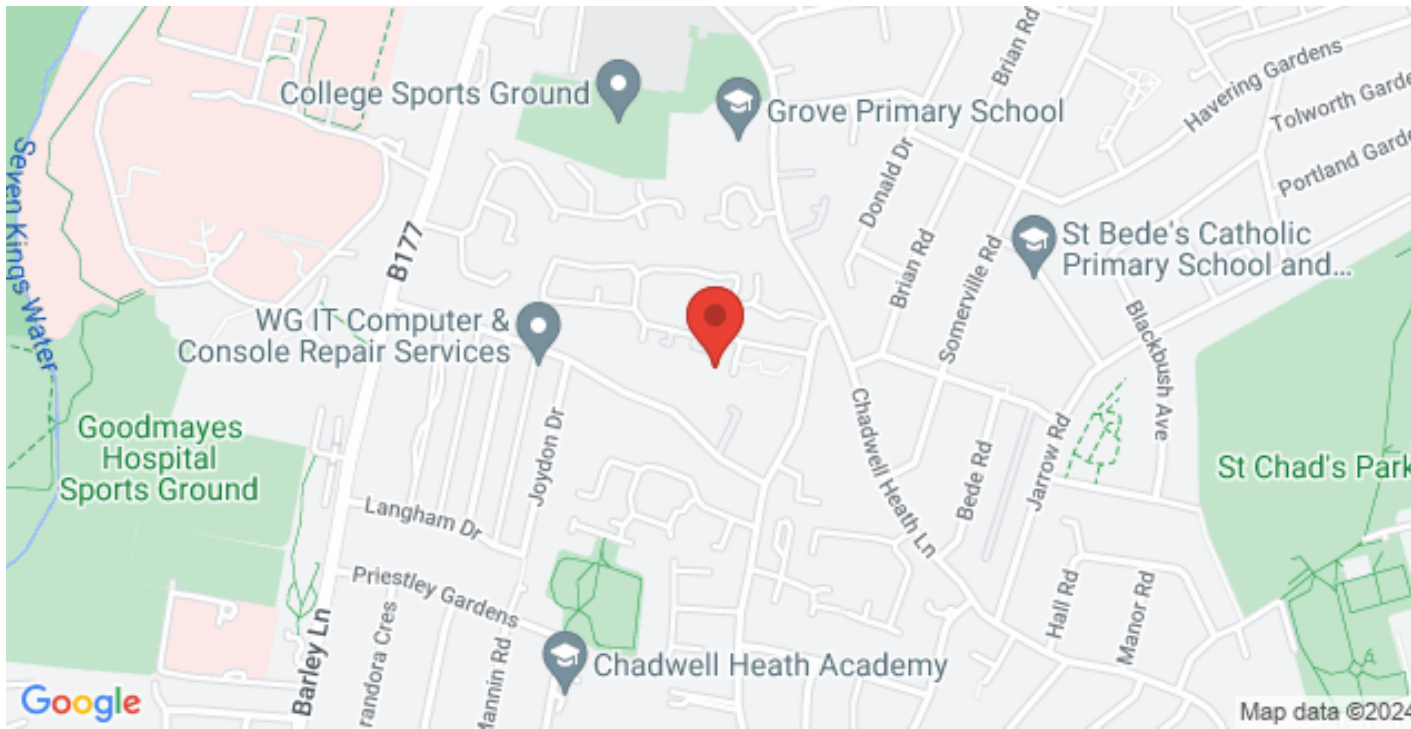
Presented in good decorative order throughout, this lovely apartment boasts a good size master bedroom equipped with a built-in wardrobe and en-suite shower room, a further double bedroom, a three piece family sized bathroom suite, large living room and a separate fitted kitchen.

Further benefits to this property include an allocated parking space for one car. Swaffham Court is ideally located moments from a plethora of thriving shopping areas, 24hr superstores, excellent transport links as well as high performing schools. Call us today for more information regarding

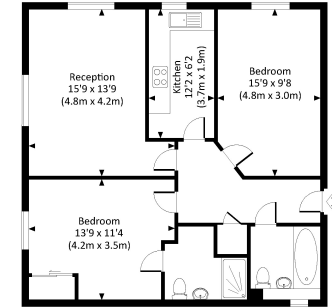
# Swaffham Court, Glandford Way, Chadwell Heath, RM6

Guide Price: £1,150 - £1,350 PCM

 2  2  1  1



SWAFFHAM COURT  
Approx. gross internal area  
755 Sq.Ft. / 70.20 Sq.M.



GROUND FLOOR



2 2 1 1

Swaffham Court, Glandford Way, Chadwell Heath,  
RM6

020 3422 2333 020 3422 2333

hello@estateology.com

25 Roman Road, Bethnal Green, London, E2 0HU

29th Floor, One Canada Square, Canary Wharf, London, E14 5DY

© 2024 Estateology Company registration no. 9628198. Registered office: 555-557 Cranbrook Road, Gants Hill, Ilford, Essex, IG2 6HE

We have prepared these property particulars as a general guide to a broad description of the property. They are not intended to constitute part of an offer or contract. We have not carried out a structural survey and the services, appliances and specific fittings have not been tested. All photographs, measurements, floorplans and distances referred to are given as a guide only and should not be relied upon for the purchase of carpets or any other fixtures or fittings. Lease details, service charges and ground rent (where applicable) and council tax are given as a guide only and should be checked and confirmed by your Solicitor prior to exchange of contracts. The copyright of all details, photographs and floorplans remain exclusive to Estateology.