



ESTATEOLOGY

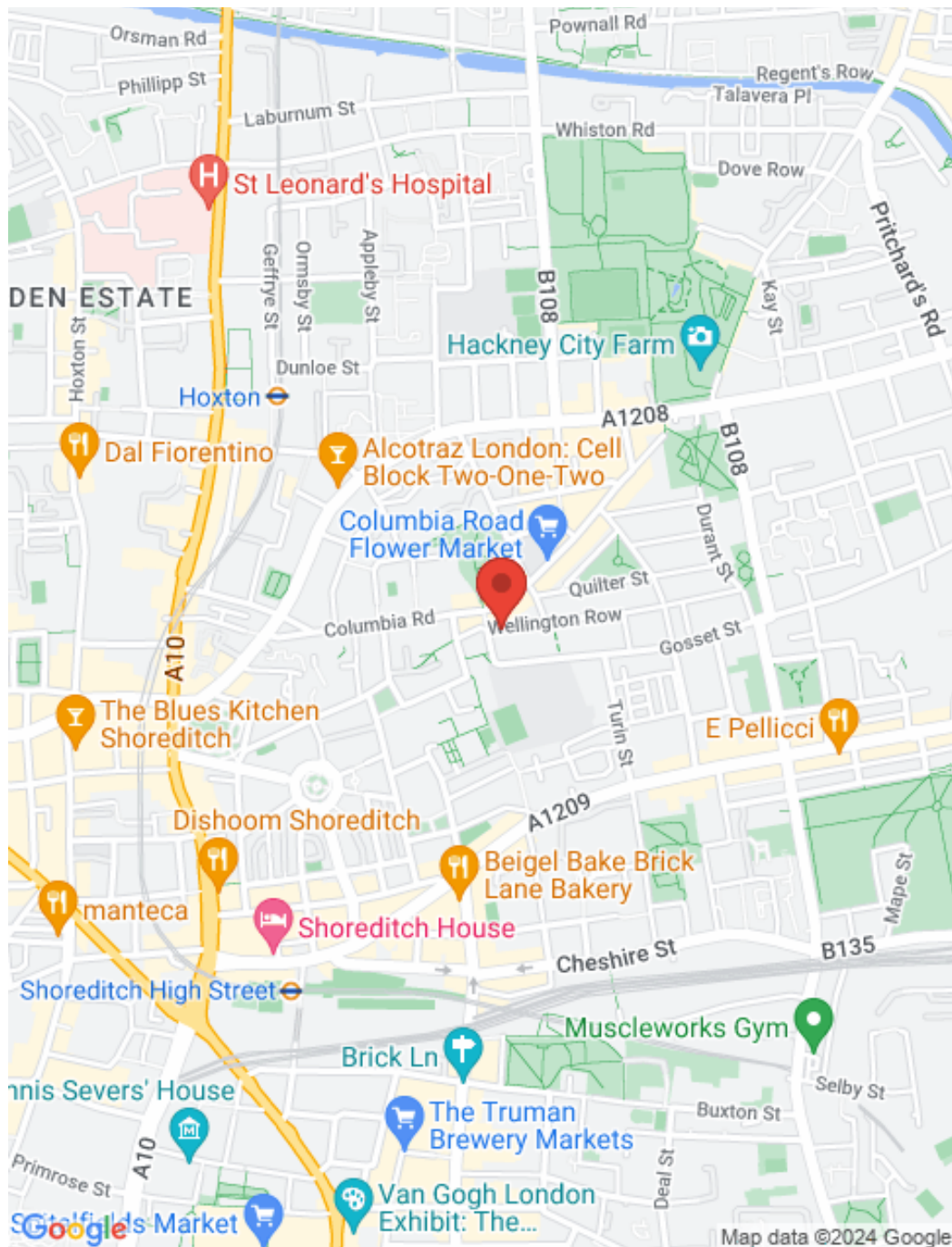
Pakenham House , Wellington Row, London, E2

Guide Price: £400,000 - £440,000

2 1





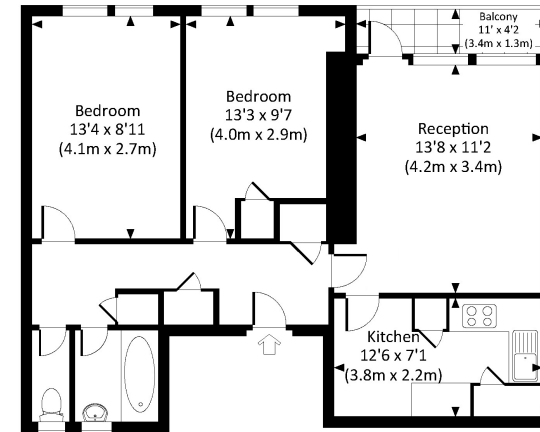


## Key features

Two bedroom flat available close to the trendy Columbia road and Shoreditch triangle. It features a fitted kitchen large enough to dine in. Double glazed windows, wood laminate flooring throughout. With easy access to the city, it would suit a professional couple or an investor. Call us now to book a viewing.

- Two bedrooms
- Living Room
- Balcony
- Kitchen / Diner
- Sole Agents
- Excellent transport links
- Close to local amenities
- Close to Shoreditch Station

PACKENHAM HS  
Approx. gross internal area  
645 Sq.Ft. / 59.98 Sq.M.



FOURTH FLOOR

Whilst every attempt has been made to ensure the accuracy of the floor plan shown, all measurements, positioning, fixtures, fittings and any other data shown are an approximate interpretation for illustrative purposes only and are not to scale. No responsibility is taken for any error, omission, mis-statement or use of data shown.

# ESTATEOLOGY

☎ 020 3422 2333 ☎ 020 3095 2333

✉ hello@estateology.com

📍 25 Roman Road, Bethnal Green, London, E2 0HU

📍 29th Floor, One Canada Square, Canary Wharf, London, E14 5DY

© 2024 Estateology Company registration no. 9628198. Registered office: 555-557 Cranbrook Road, Gants Hill, Ilford, Essex, IG2 6HE

We have prepared these property particulars as a general guide to a broad description of the property. They are not intended to constitute part of an offer or contract. We have not carried out a structural survey and the services, appliances and specific fittings have not been tested. All photographs, measurements, floorplans and distances referred to are given as a guide only and should not be relied upon for the purchase of carpets or any other fixtures or fittings. Lease details, service charges and ground rent (where applicable) and council tax are given as a guide only and should be checked and confirmed by your Solicitor prior to exchange of contracts. The copyright of all details, photographs and floorplans remain exclusive to Estateology.