

'NO TENANT FEES & £1,000 DEPOSIT' Pioneer Point is located in Ilford town centre close to the station and local amenities. Fully furnished modern apartment with a bright open-plan kitchen/reception accompanied by a spacious one bedroom, one bathroom with panoramic views of the City. Early viewing highly recommended, call now to arrange your exclusive viewing slot.

Key features

- 1 Bedroom / 1 Bathroom
- Open Plan Kitchen / Reception
- Contemporary Furniture & Fittings
- Panoramic Views
- Concierge Service
- Double-glazed Windows
- Cinema Room
- Discounted Gymnasium membership for residents
- Moments from Ilford Station (Cross Rail)
- Available Now

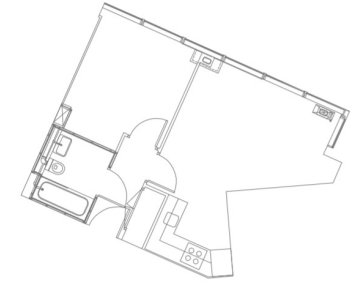
Guide Price: £1300 to £1450 PCM.

Sought-after Pioneer Building, located in the heart of Ilford town centre with its variety of amenities. The development is located only a moments walk from Ilford TFL Rail station, providing a high standard of living with fast, simple access into Stratford, Liverpool Street, Canary Wharf and Central London. With it's industrial warehouse style Reception and resident communal space, Pioneer Point really is Ilford's most recognisable landmark for newcomers by train or car.

The bright fully fitted open-plan kitchen/reception is complemented by a

Pioneer Point, Winston Way, Ilford, IG1

Guide Price: £1300 to £1450 PCM



020

1 1 1 1

Pioneer Point, Winston Way, Ilford, IG1

020 3422 2333 020 3422 2333

hello@estateology.com

25 Roman Road, Bethnal Green, London, E2 0HU

29th Floor, One Canada Square, Canary Wharf, London, E14 5DY

© 2024 Estateology Company registration no. 9628198. Registered office: 555-557 Cranbrook Road, Gants Hill, Ilford, Essex, IG2 6HE

We have prepared these property particulars as a general guide to a broad description of the property. They are not intended to constitute part of an offer or contract. We have not carried out a structural survey and the services, appliances and specific fittings have not been tested. All photographs, measurements, floorplans and distances referred to are given as a guide only and should not be relied upon for the purchase of carpets or any other fixtures or fittings. Lease details, service charges and ground rent (where applicable) and council tax are given as a guide only and should be checked and confirmed by your Solicitor prior to exchange of contracts. The copyright of all details, photographs and floorplans remain exclusive to Estateology.