



Recently renovated three bedroom mid terrace house, moments away from Upney Station and Barking Station offering easy access to Canary Wharf and the City as well as nearby amenities. Early viewing advised.

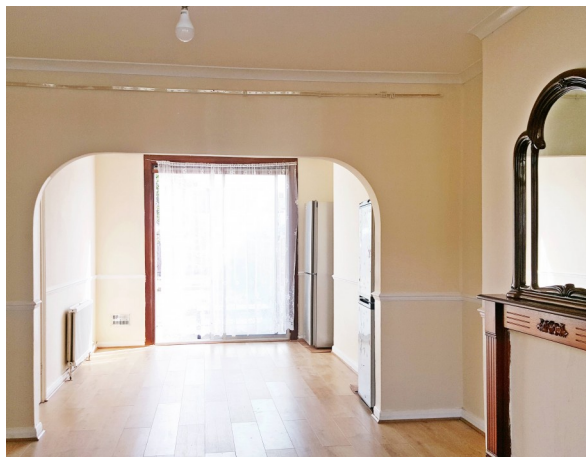
Key features

- Terraced House
- Three Double Bedrooms
- Through Lounge
- Separate Fitted Kitchen
- Fire Feature / Bay Windows
- Front / Back Gardens
- Close to Local Amenities
- Upney (District Line) Underground Station
- Barking Station (c2c, District Line)
- Available Now!

Guide Price: £1550 - £1800 PCM

Spacious and well proportioned three bedroom house available immediately within a popular residential area moments away from Upney station (District Line) and Barking Station (c2c and District Line). This furnished home boasts three double bedrooms, a spacious through lounge, separate fitted kitchen, a three piece bathroom suite, front and approximately 60ft rear garden.

Lyndhurst Gardens is ideally located only moments away from nearby transport links and amenities. In close proximity to local amenities, a health centre, Vicarage Field shopping centre is a short walk. Walking distance to primary and secondary schools. Excellent transport links with A13 and A406 only a short drive away and within a short walk there are



ESTATEOLOGY

Lyndhurst Gardens, Barking, IG11

Guide Price: £1550 - £1800 PCM

3 1 1 2



3 1 1 2

Lyndhurst Gardens, Barking, IG11

ESTATEOLOGY

020 3422 2333 020 3422 2333

hello@estateology.com

25 Roman Road, Bethnal Green, London, E2 0HU

29th Floor, One Canada Square, Canary Wharf, London, E14 5DY

© 2024 Estateology Company registration no. 9628198. Registered office: 555-557 Cranbrook Road, Gants Hill, Ilford, Essex, IG2 6HE

We have prepared these property particulars as a general guide to a broad description of the property. They are not intended to constitute part of an offer or contract. We have not carried out a structural survey and the services, appliances and specific fittings have not been tested. All photographs, measurements, floorplans and distances referred to are given as a guide only and should not be relied upon for the purchase of carpets or any other fixtures or fittings. Lease details, service charges and ground rent (where applicable) and council tax are given as a guide only and should be checked and confirmed by your Solicitor prior to exchange of contracts. The copyright of all details, photographs and floorplans remain exclusive to Estateology.