



**STUNNING VIEWS** - A short walk into the city centre is this lovely 2 bedroom 2 bathroom apartment, great location for city living with easy access to Salford Quays, Old Trafford, A57 and M62 access to get in and out of Manchester City Centre. Just 600m from Spinningfields. The property also benefits from a balcony an on site 24hr concierge, gymnasium and cinema room. Call now to arrange a viewing.

## Key features

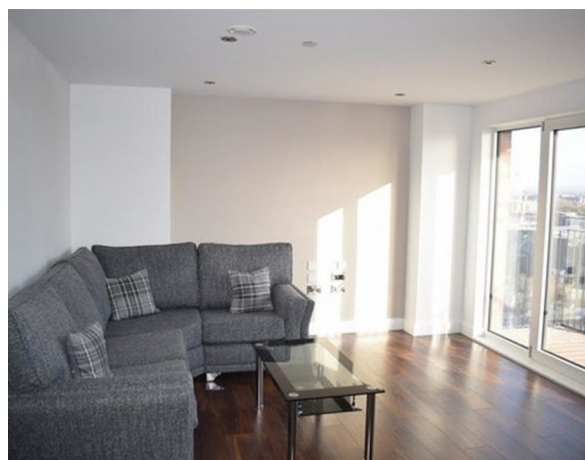
- 2 Bedroom
- 2 Bathroom
- Ensuite
- Balcony
- 24hr Concierge
- Gymnasium
- Cinema Room
- Available 19th August 2019
- Walking distance to Spinningfields
- Close to key transport hubs including Deansgate, Castlefield and Oxford Road

Guide Price: £850 - £1150 PCM

A luxury waterside development just minutes from Manchester's central business district.

Rivergate House at Wilburn Wharf is a stunning new development along the city centre stretch of Manchester's River Irwell.

This new-build waterfront residence is situated on the 16th floor with views of Old Trafford and the city centre comes with 2 good sized bedrooms, one ensuite, a modern fitted open plan kitchen living space



ESTATEOLOGY

Rivergate House, Willburn Basin, Ordsall Lane,

Guide Price: £850 - £1150 PCM  
Manchester, M5

2 2



2 2 1 1

Rivergate House, Willburn Basin, Ordsall Lane,  
Manchester, M5

ESTATEOLOGY

020 3422 2333 020 3422 2333

hello@estateology.com

25 Roman Road, Bethnal Green, London, E2 0HU

29th Floor, One Canada Square, Canary Wharf, London, E14 5DY

© 2024 Estateology Company registration no. 9628198. Registered office: 555-557 Cranbrook Road, Gants Hill, Ilford, Essex, IG2 6HE

We have prepared these property particulars as a general guide to a broad description of the property. They are not intended to constitute part of an offer or contract. We have not carried out a structural survey and the services, appliances and specific fittings have not been tested. All photographs, measurements, floorplans and distances referred to are given as a guide only and should not be relied upon for the purchase of carpets or any other fixtures or fittings. Lease details, service charges and ground rent (where applicable) and council tax are given as a guide only and should be checked and confirmed by your Solicitor prior to exchange of contracts. The copyright of all details, photographs and floorplans remain exclusive to Estateology.