



ESTATEOLOGY

Cann Hall Road, Leytonstone, London, E11

Guide Price £400,000 - £450,000

4 2





Key features

A fantastic 4 double bedroom mid terraced house, incredibly spacious with 2 large reception rooms, a kitchen large enough to dine in and a loft conversion. Located close to local amenities, Wanstead Flats and Westfield. Lots of potential for a family or as an investment.

- 4 double bedrooms
- 2 reception rooms
- Large kitchen
- Utility room
- Wanstead Flats
- Westfield shopping centre

ESTATEOLOGY

☎ 020 3422 2333 ☎ 020 3095 2333

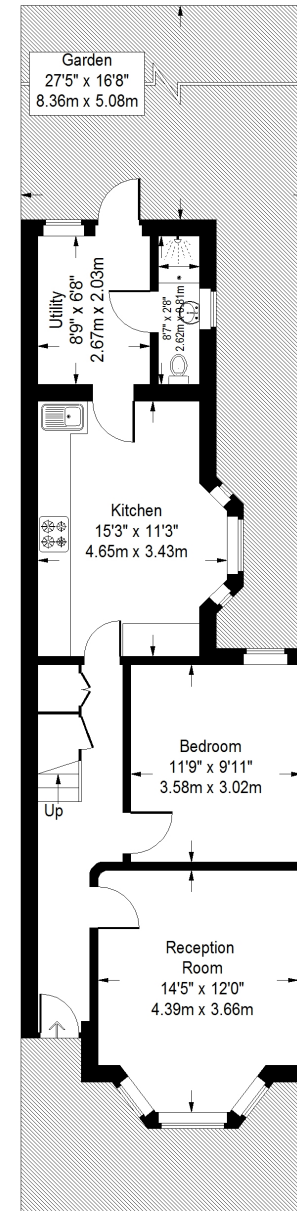
✉ hello@estateology.com

📍 25 Roman Road, Bethnal Green, London, E2 0HU

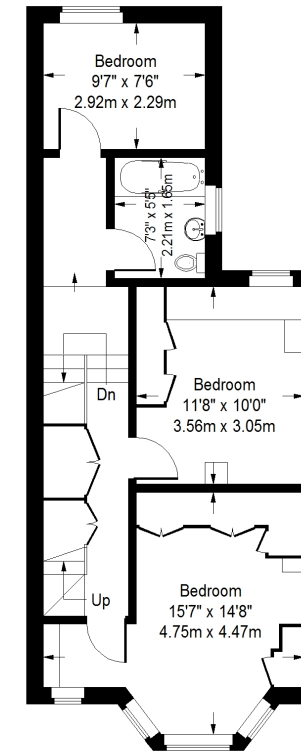
📍 29th Floor, One Canada Square, Canary Wharf, London, E14 5DY

© 2024 Estateology Company registration no. 9628198. Registered office: 555-557 Cranbrook Road, Gants Hill, Ilford, Essex, IG2 6HE

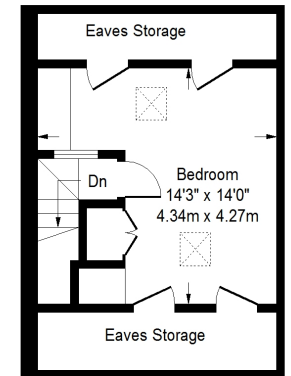
We have prepared these property particulars as a general guide to a broad description of the property. They are not intended to constitute part of an offer or contract. We have not carried out a structural survey and the services, appliances and specific fittings have not been tested. All photographs, measurements, floorplans and distances referred to are given as a guide only and should not be relied upon for the purchase of carpets or any other fixtures or fittings. Lease details, service charges and ground rent (where applicable) and council tax are given as a guide only and should be checked and confirmed by your Solicitor prior to exchange of contracts. The copyright of all details, photographs and floorplans remain exclusive to Estateology.



Ground Floor



First Floor



Second Floor

Cann Hall Road

Approximate Gross Internal Area
 Ground Floor = 59.7 sq m / 643 sq ft
 First Floor = 50.5 sq m / 543 sq ft
 Second Floor (Excluding Eaves Storage)
 18.7 sq m / 201 sq ft
 Total = 128.9 sq m / 1387 sq ft



This plan is for layout guidance only. Not drawn to scale unless stated. Windows and door openings are approximate. Whilst every care is taken in the preparation of this plan, please check all dimensions, shapes and compass bearings before making any decisions reliant upon them. (ID223784)