



ESTATEOLOGY

Betts House, Crowder Street, London, E1

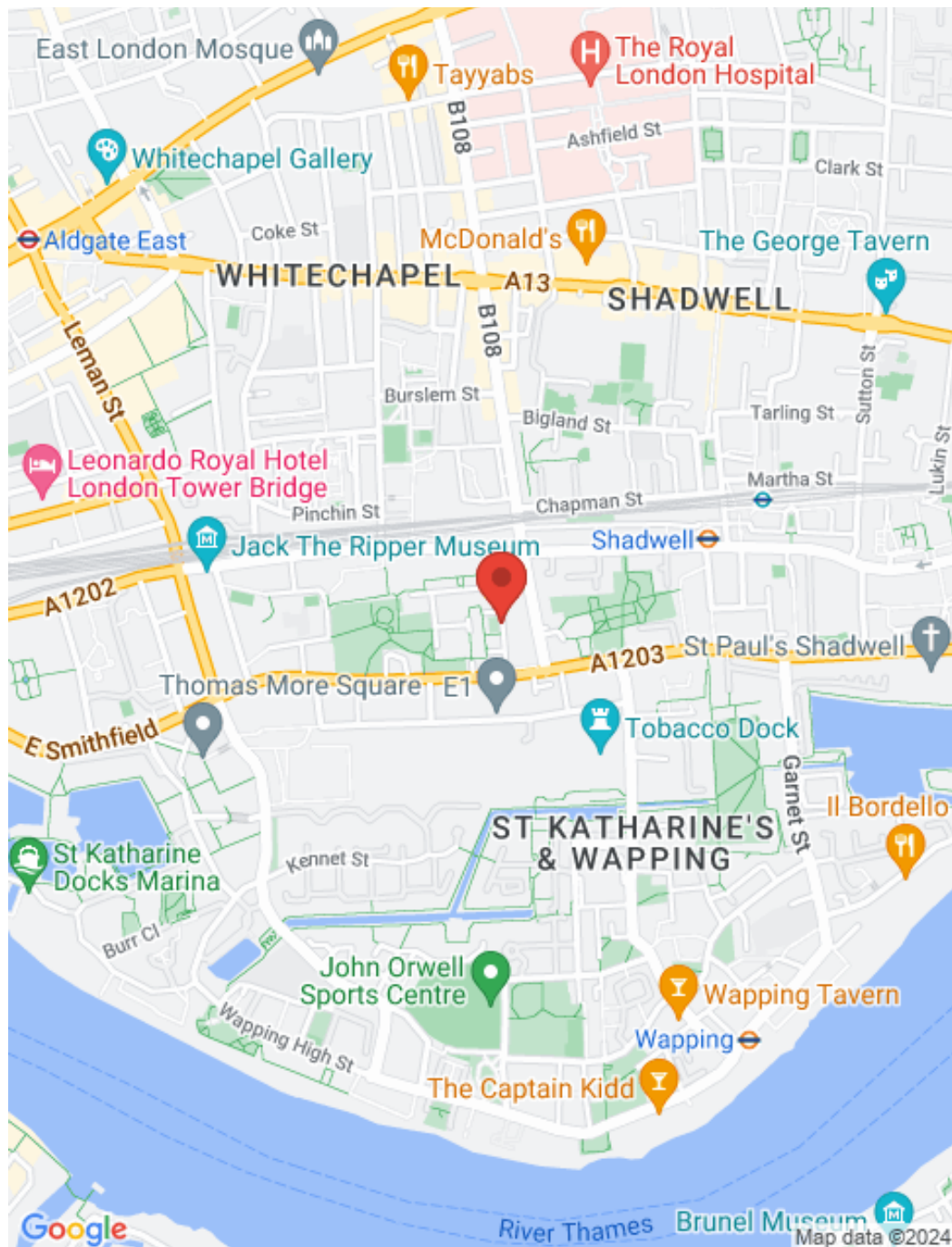
Guide Price £575,000 - £625,000

5 2







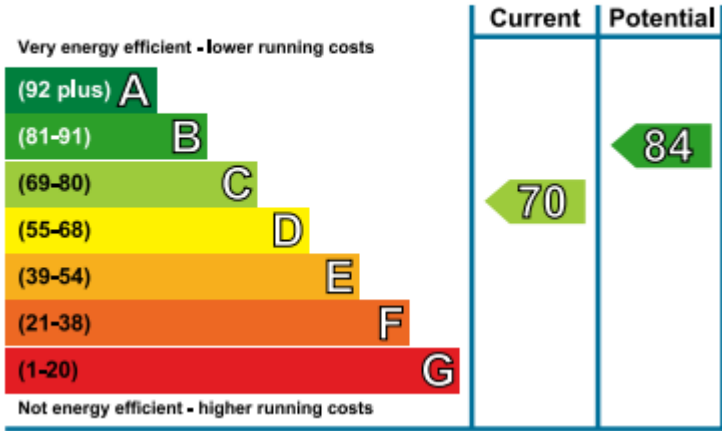


## Key features

Unique first floor property. Originally two flats now converted as one. It features two kitchens, two bathrooms, 5 bedrooms and a reception room. Fully double glazed, with wood laminate flooring. Situated off Cable Street it would suit a large family or an investor. Call us now to book a viewing.

- 5 bedrooms
- 2 bathrooms
- 2 toilets
- 2 kitchens
- Excellent transport links
- Close to local amenities

## Energy Efficiency Rating



# ESTATEOLOGY

☎ 020 3422 2333 ☎ 020 3095 2333

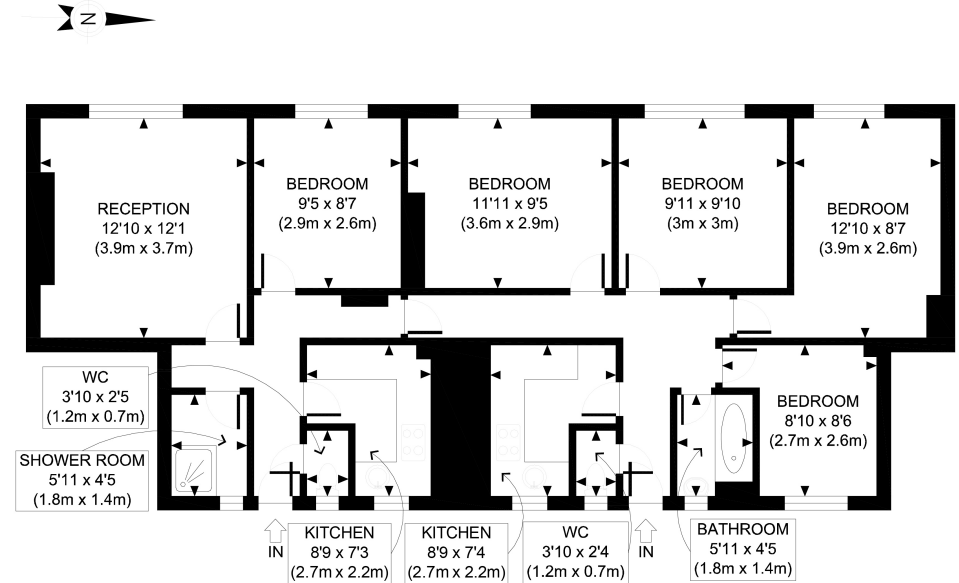
✉ hello@estateology.com

📍 25 Roman Road, Bethnal Green, London, E2 0HU

📍 29th Floor, One Canada Square, Canary Wharf, London, E14 5DY

© 2024 Estateology Company registration no. 9628198. Registered office: 555-557 Cranbrook Road, Gants Hill, Ilford, Essex, IG2 6HE

We have prepared these property particulars as a general guide to a broad description of the property. They are not intended to constitute part of an offer or contract. We have not carried out a structural survey and the services, appliances and specific fittings have not been tested. All photographs, measurements, floorplans and distances referred to are given as a guide only and should not be relied upon for the purchase of carpets or any other fixtures or fittings. Lease details, service charges and ground rent (where applicable) and council tax are given as a guide only and should be checked and confirmed by your Solicitor prior to exchange of contracts. The copyright of all details, photographs and floorplans remain exclusive to Estateology.



FIRST FLOOR  
GROSS INTERNAL  
FLOOR AREA 1057 SQ FT

APPROX. GROSS INTERNAL FLOOR AREA 1057 SQ FT / 98 SQM

Ref: Copyright **photoplan**

Disclaimer: Floor plan measurements are approximate and are for illustrative purposes only. While we do not doubt the floor plan accuracy and completeness, you or your advisors should conduct a careful, independent investigation of the property in respect of monetary valuation