

Fantastic commercial space in East Tower at The Landmark. Developed by award winning contractors CPL and designed by architects Squire and Partners. Spread over ground and mezzanine. The premises has mixed use, call to discuss all opportunities.

## Key features

- Mixed use premises
- Set over 2 Levels
- Full glass frontage
- Triple aspect
- Approx 12,776 sqft
- Excellent transport links

Guide Price: £15,400 - £16,250 PCM. Fees apply

Guide Price: £185,000 - £195,000 PA.

Developed by the award winning CPL contractors and designed by architects Squire and Partners, The Landmark consists of 2 towers, the East Tower and the West Tower. This fantastic commercial space is part of the East Tower.

Beautifully designed and located in the heart of Canary Wharf this mixed use premises boasts approximately 12,776 sqft arranged over the ground, mezzanine and basement level. The basement which is over 6000 sqft can be tenanted separately for additional £50,000 - £60,000 PA . Suitable for a variety of commercial use, with a fantastic layout and a stunning full glass frontage, it is triple aspect and the space can be tenanted separately. It also has two parking spaces, for which the price can be negotiated separately. The Landmark is ideally situated to local amenities and Docklands Railway lines

# The Landmark, Landmark Square, London, E14

Guide Price: £15,400 - £16,250 PCM Fees apply





## The Landmark, Landmark Square, London, E14

☎ 020 3422 2333 ☎ 020 3422 2333

✉ hello@estateology.com

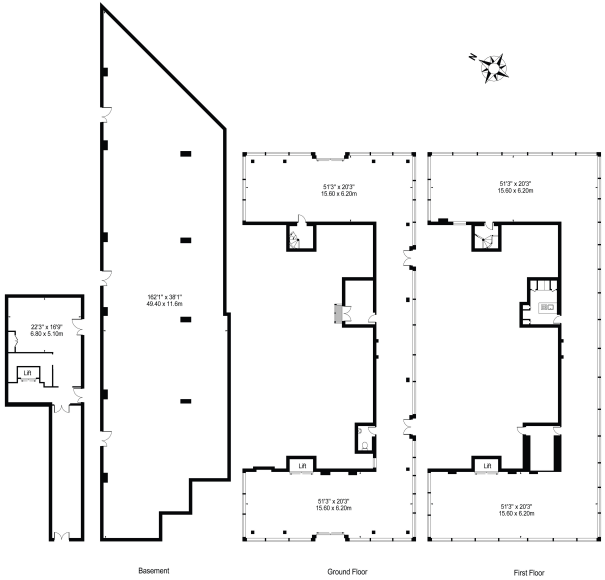
📍 25 Roman Road, Bethnal Green, London, E2 0HU

📍 29th Floor, One Canada Square, Canary Wharf, London, E14 5DY

© 2024 Estateology Company registration no. 9628198. Registered office: 555-557 Cranbrook Road, Gants Hill, Ilford, Essex, IG2 6HE

We have prepared these property particulars as a general guide to a broad description of the property. They are not intended to constitute part of an offer or contract. We have not carried out a structural survey and the services, appliances and specific fittings have not been tested. All photographs, measurements, floorplans and distances referred to are given as a guide only and should not be relied upon for the purchase of carpets or any other fixtures or fittings. Lease details, service charges and ground rent (where applicable) and council tax are given as a guide only and should be checked and confirmed by your Solicitor prior to exchange of contracts. The copyright of all details, photographs and floorplans remain exclusive to Estateology.

Landmark East - Commercial Unit  
Approx. Gross Internal Area 12776 Sq Ft - 1186.89 Sq M



For Illustration Purposes Only - Not To Scale  
This floor plan should be used as a general outline for guidance only and does not constitute in whole or in part an offer or contract.  
Any intending purchaser or lessee should satisfy themselves by inspection, searches, enquiries and full survey as to the correctness of each statement.  
Any areas, measurements or distances quoted are approximate and should not be used to value a property or be the basis of any sale or let.