



TRANSPORT LINKS, GARDEN, AMENITIES !!! This ground floor recently decorated 1 bedroom flat with a spacious lounge is located in the heart of Seven Kings. The flat boasts a huge garden, local amenities along the High Road and excellent transport links for an easy commute into Canary Wharf, The City and Stratford International.

## Key features

- 1 Good Size Bedroom
- Separate Lounge / Dining Area
- Unfurnished
- Seven Kings Station
- Goodmayes Station
- Private Garden
- Available Now
- Shared Bills

Guide Price: £900 - £1150pcm

Spacious 1 bedroom ground floor flat within a mid terrace Victorian house conversion. The flat offers a separate lounge/dining area, 4 piece bathroom suite as well as sole use of SW facing garden, which backs directly onto Westwood Recreation Ground.

The property comprises 1 double bedroom with bay window with cast iron fireplace, fitted kitchen with SW facing rear garden. This spacious home also benefits from double glazing and gas central heating throughout. Westwood road is conveniently located close to all the amenities off the High Road in Seven Kings, moments from Seven Kings station (Crossrail - Elizabeth Line) and offers excellent transport links for easy access to Canary Wharf, The City, Stratford International and Westfield Shopping





1 1 1 1

Westwood Road, Ilford, IG3

ESTATEOLOGY

020 3422 2333 020 3422 2333

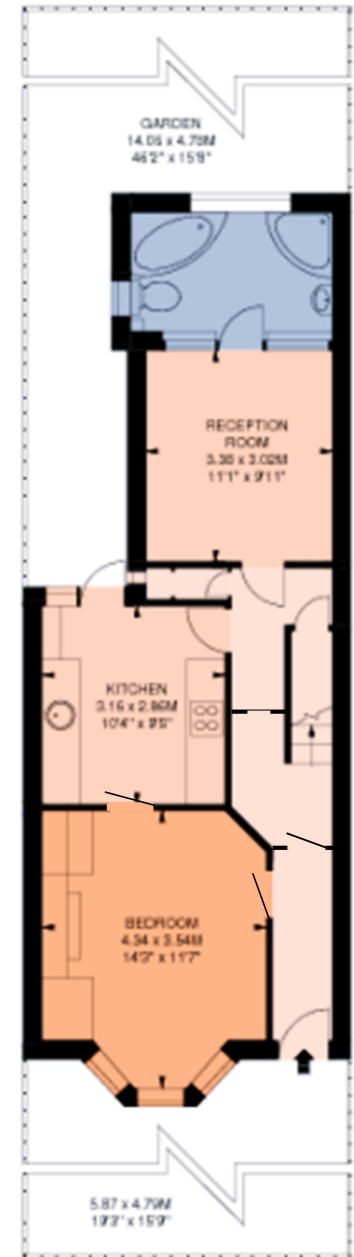
hello@estateology.com

25 Roman Road, Bethnal Green, London, E2 0HU

29th Floor, One Canada Square, Canary Wharf, London, E14 5DY

© 2024 Estateology Company registration no. 9628198. Registered office: 555-557 Cranbrook Road, Gants Hill, Ilford, Essex, IG2 6HE

We have prepared these property particulars as a general guide to a broad description of the property. They are not intended to constitute part of an offer or contract. We have not carried out a structural survey and the services, appliances and specific fittings have not been tested. All photographs, measurements, floorplans and distances referred to are given as a guide only and should not be relied upon for the purchase of carpets or any other fixtures or fittings. Lease details, service charges and ground rent (where applicable) and council tax are given as a guide only and should be checked and confirmed by your Solicitor prior to exchange of contracts. The copyright of all details, photographs and floorplans remain exclusive to Estateology.



Ground Floor