



Well presented 1 bed apartment situated in a secure gated development near East India Dock Basin and the River Thames. This bright and airy apartment benefits from an open plan modern fitted kitchen, a private balcony with access from the large reception/dining room. Ideally located moments from the fantastic selection of shops, bars and restaurants in Canary Wharf. Private secure parking space negotiable.

Key features

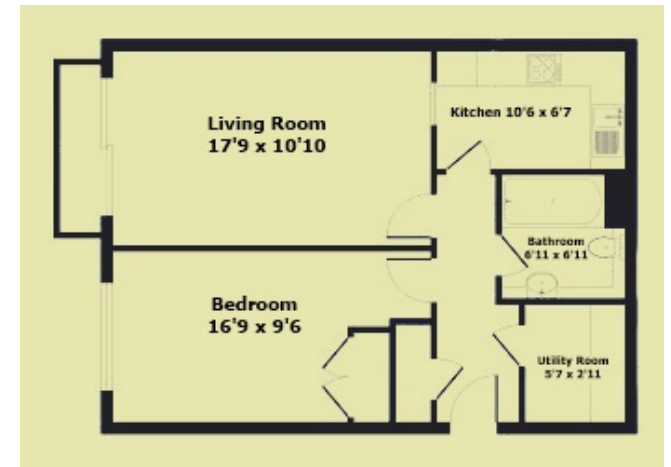
- One Bedroom
- Furnished
- Open Plan Fitted Kitchen
- East India / Blackwall DLR
- Concierge / Porter
- Excellent transport links
- Close to local amenities
- Private Balcony
- Parking Negotiable
- Available Immediately



Guide Price: £1,350 - £1,600 PCM

Come and take a look at this 1 bed apartment within the gated development. The apartment is well situated for Canary Wharf and East India DLR with easy access to the City and West end. The property boasts a spacious living room with large windows leading onto a balcony allowing plenty of natural light, modern fitted kitchen/diner, good sized bedrooms, a three piece bathroom suite. Further benefits from utility room, neutral decor, private balcony, gas central heating.

Newport Avenue is well connected and has excellent transport links with



🛏 1 🛎 1 🚗 1 🌿 1

Sail Court, Newport Avenue, London E14

ESTATEOLOGY

☎ 020 3422 2333 ☎ 020 3422 2333

✉ hello@estateology.com

📍 25 Roman Road, Bethnal Green, London, E2 0HU

📍 29th Floor, One Canada Square, Canary Wharf, London, E14 5DY

© 2024 Estateology Company registration no. 9628198. Registered office: 555-557 Cranbrook Road, Gants Hill, Ilford, Essex, IG2 6HE

We have prepared these property particulars as a general guide to a broad description of the property. They are not intended to constitute part of an offer or contract. We have not carried out a structural survey and the services, appliances and specific fittings have not been tested. All photographs, measurements, floorplans and distances referred to are given as a guide only and should not be relied upon for the purchase of carpets or any other fixtures or fittings. Lease details, service charges and ground rent (where applicable) and council tax are given as a guide only and should be checked and confirmed by your Solicitor prior to exchange of contracts. The copyright of all details, photographs and floorplans remain exclusive to Estateology.