



Well presented mixed use commercial and office space within the Clifton Canary Trade Centre on Tobago Street, which comprises of retail/office unit with shared kitchen, WC and interview/meeting room. Ideally located moments from the fantastic selection of shops, bars and restaurants in Canary Wharf. Early viewing highly recommended.

Key features

- Retails /Office 2
- Approx 15.8 Sq M
- Close to amenities
- Shared kitchen Shared WC
- Shared Interview / Meeting room
- Available now

Guide Price £12,000 - £14,000 PA. Fees Apply

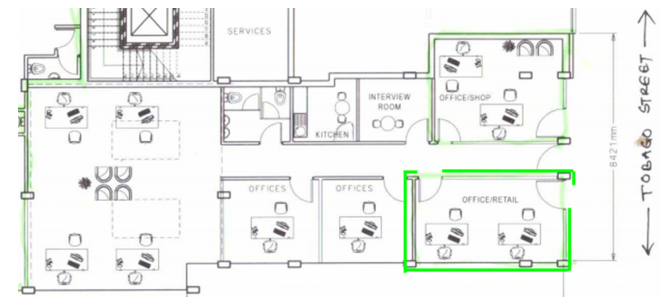
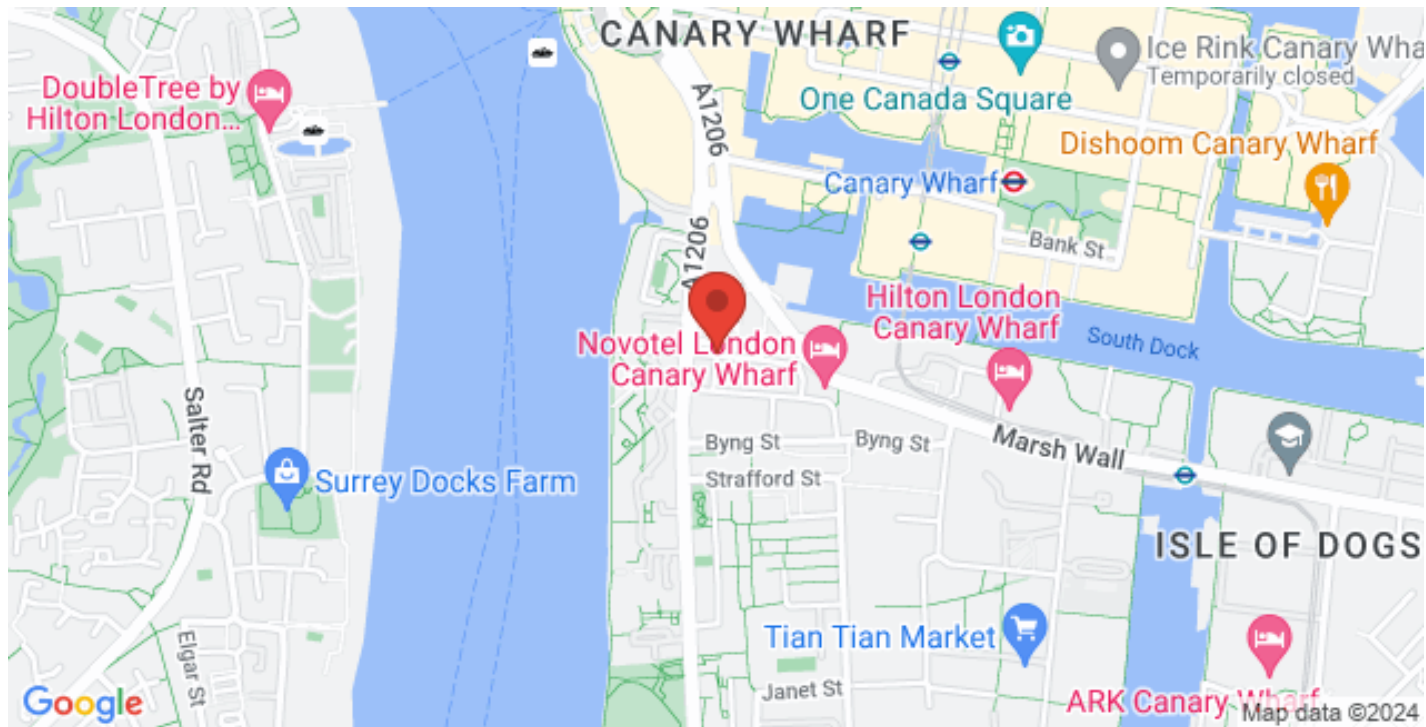
Well designed and located in the heart of the Canary Wharf is this mix use premises boasts retail/ office space with shared interview and meeting room, fitted kitchen, separate WC across the ground level. Suitable for a variety of commercial use and office use with a workable layout which can be separated to suit the tenant's needs and is ideally situated to local amenities and Docklands Railway lines.

With the surge in residential developments and ongoing expansion of the area.

The Clifton Canary Trade Centre is well placed for commercial and office use.

Being in the heart of the Canary Wharf hub, the area features a wealth of luxury retail centres, prestigious health clubs, high end hotels, bars and restaurants and with future plans to build the tallest building project in





1 1 1 1

Westferry, Canary Wharf, London E14

ESTATEOLOGY

020 3422 2333 020 3422 2333

hello@estateology.com

25 Roman Road, Bethnal Green, London, E2 0HU

29th Floor, One Canada Square, Canary Wharf, London, E14 5DY

© 2024 Estateology Company registration no. 9628198. Registered office: 555-557 Cranbrook Road, Gants Hill, Ilford, Essex, IG2 6HE

We have prepared these property particulars as a general guide to a broad description of the property. They are not intended to constitute part of an offer or contract. We have not carried out a structural survey and the services, appliances and specific fittings have not been tested. All photographs, measurements, floorplans and distances referred to are given as a guide only and should not be relied upon for the purchase of carpets or any other fixtures or fittings. Lease details, service charges and ground rent (where applicable) and council tax are given as a guide only and should be checked and confirmed by your Solicitor prior to exchange of contracts. The copyright of all details, photographs and floorplans remain exclusive to Estateology.