



Recently refurbished 2 double bedroom top floor flat with views of The Shard, Gherkin Building and Canary Wharf. Fully double glazed, with a newly fitted kitchen and bathroom this flat has an airy feel and an abundance of natural light.

Key features

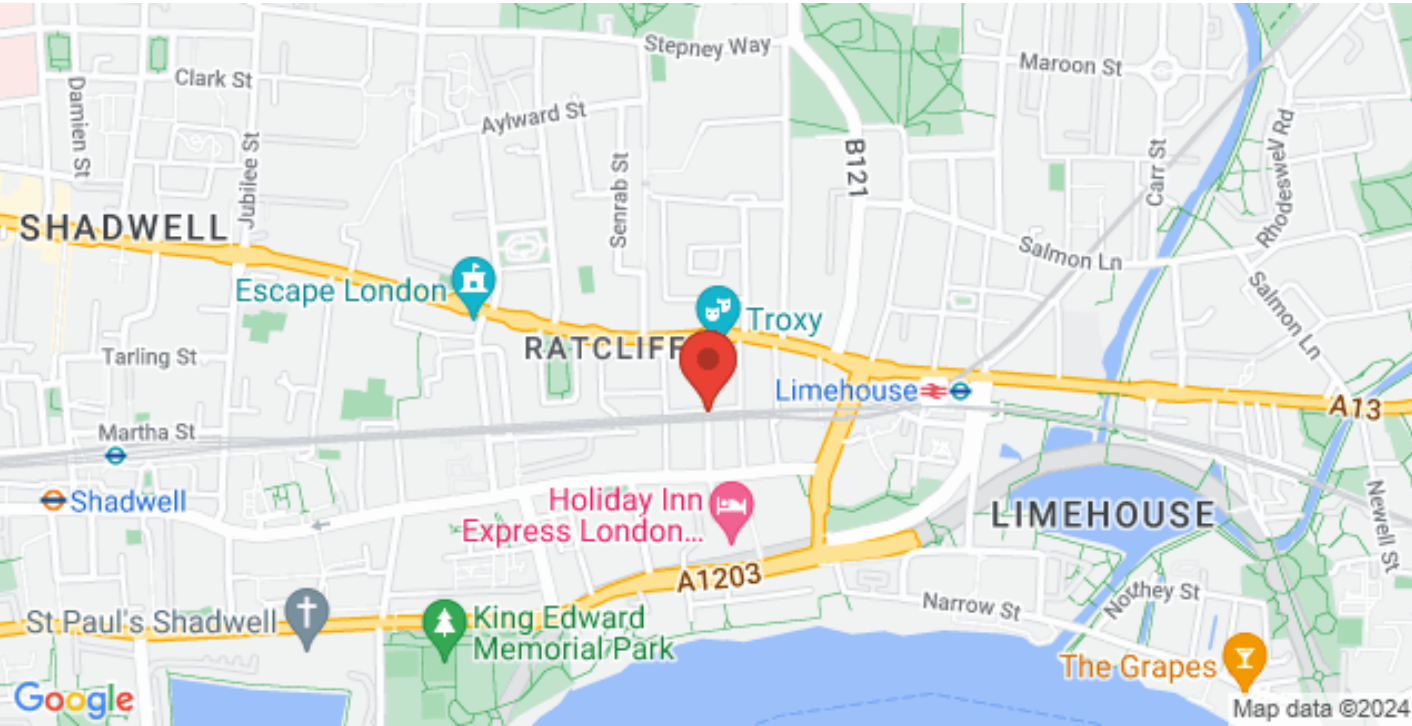
- Top Floor flat
- Fully refurbished
- 2 double bedrooms
- Large reception
- Available now
- Excellent transport links
- Close to local amenities
- Stunning views

Finished to an excellent standard in our opinion, it features stunning views of the London skyline with views of Canary Wharf, The Shard, and St Mary Axe (Gherkin building). Fully double glazed, the property allows for an abundance of light and has an airy feel. Both bedrooms are double in size with a spacious reception. The modern kitchen features an integrated gas cooker and space for a washing machine, dishwasher and a fridge. It features a modern bathroom, separate toilet, and several in-built storage cupboards.

Off Commercial Road, it has good access to local amenities, is close to Limehouse DLR, and also within walking distance of Shadwell DLR. This flat would suit a first time buyer or even an investor. Offered chain free, call us now to book a viewing.

Entrance/Hallway





2 1 1 1

Corringham House, Pitsea Street, London, E1

ESTATEOLOGY

020 3422 2333 020 3422 2333

hello@estateology.com

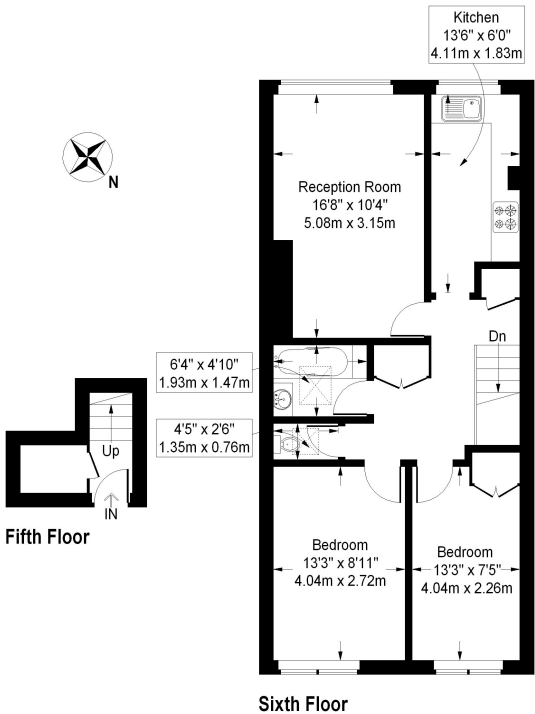
- 25 Roman Road, Bethnal Green, London, E2 0HU
- 29th Floor, One Canada Square, Canary Wharf, London, E14 5DY

© 2024 Estateology Company registration no. 9628198. Registered office: 555-557 Cranbrook Road, Gants Hill, Ilford, Essex, IG2 6HE

We have prepared these property particulars as a general guide to a broad description of the property. They are not intended to constitute part of an offer or contract. We have not carried out a structural survey and the services, appliances and specific fittings have not been tested. All photographs, measurements, floorplans and distances referred to are given as a guide only and should not be relied upon for the purchase of carpets or any other fixtures or fittings. Lease details, service charges and ground rent (where applicable) and council tax are given as a guide only and should be checked and confirmed by your Solicitor prior to exchange of contracts. The copyright of all details, photographs and floorplans remain exclusive to Estateology.

Corringham House

Approximate Gross Internal Area
64.5 sq m / 694 sq ft



This plan is for layout guidance only. Not drawn to scale unless stated. Windows and door openings are approximate. Whilst every care is taken in the preparation of this plan, please check all dimensions, shapes and compass bearings before making any decisions reliant upon them. (ID259179)

