



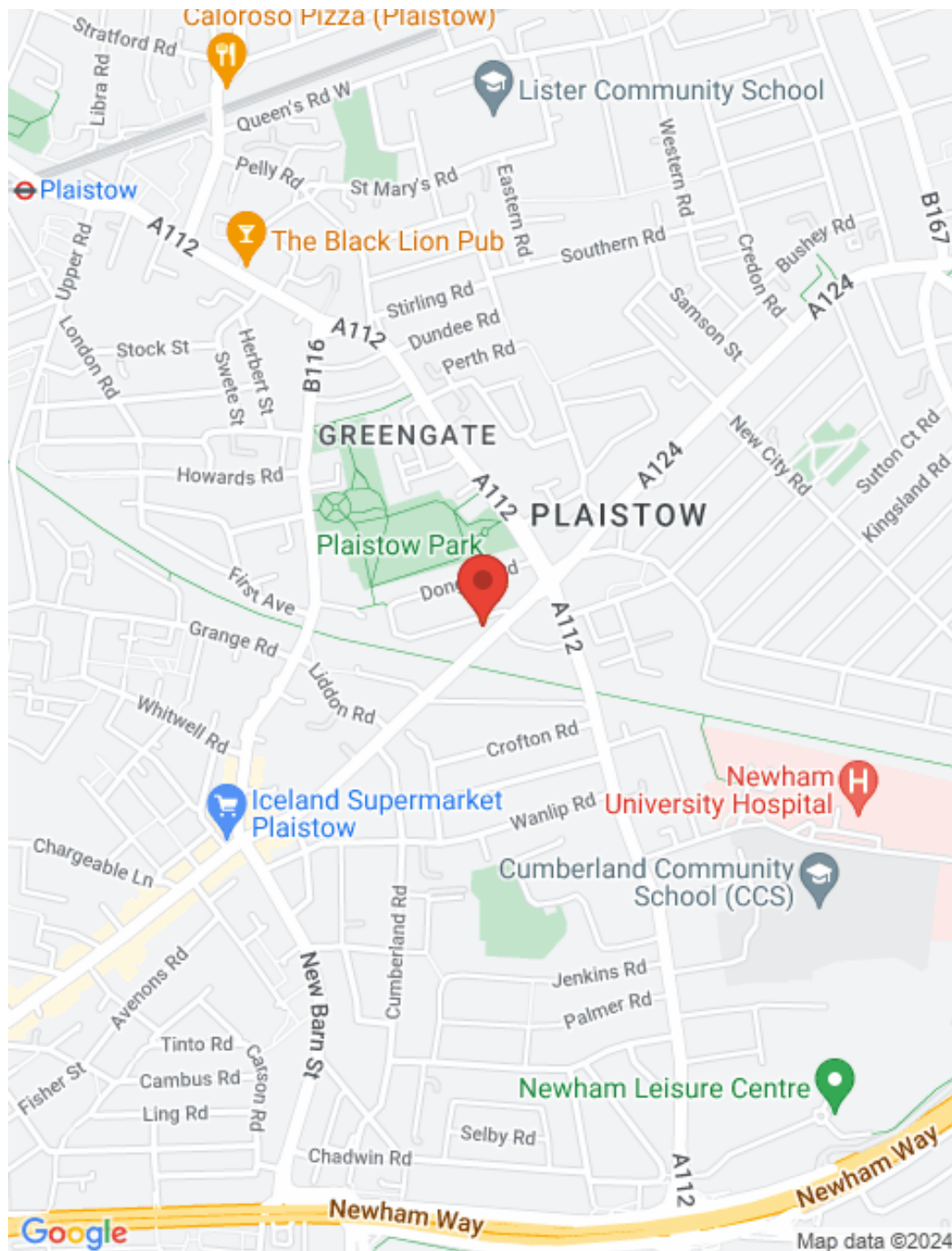
ESTATEOLOGY

Barking Road, Plaistow, London E13

Guide Price: £325,000 - £360,000

2 1



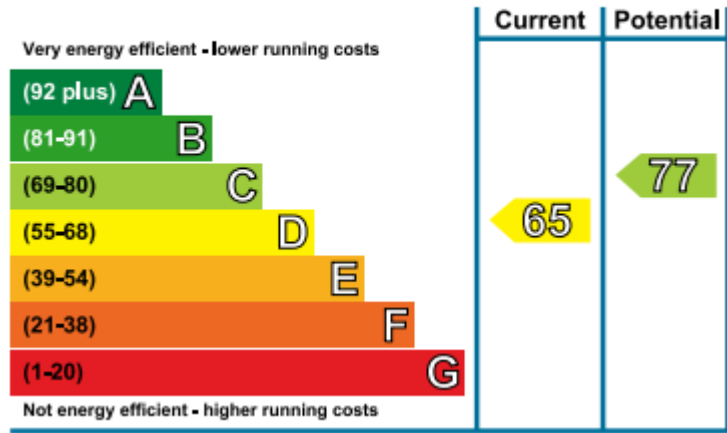


Key features

THE PERFECT FIRST TIME PURCHASE !!! Superb, newly refurbished, sizeable two bedroom maisonette perfectly arranged over two floors, offering light and airy accommodation throughout. This is a must property. Call us today. You will not want to miss this.

- Newly Refurbished
- Split-Level Maisonette
- Superb Decorative Order Throughout
- Contemporary German Made Kitchen
- Luxury Three Piece Bathroom Suite
- Separate Living Room
- Two Double Bedrooms
- Potential To Extend (SPP)
- Plaistow Underground Tube Station
- Ideal First Time Purchase/ Investment

Energy Efficiency Rating



ESTATEOLOGY

☎ 020 3422 2333 ☎ 020 3095 2333

✉ hello@estateology.com

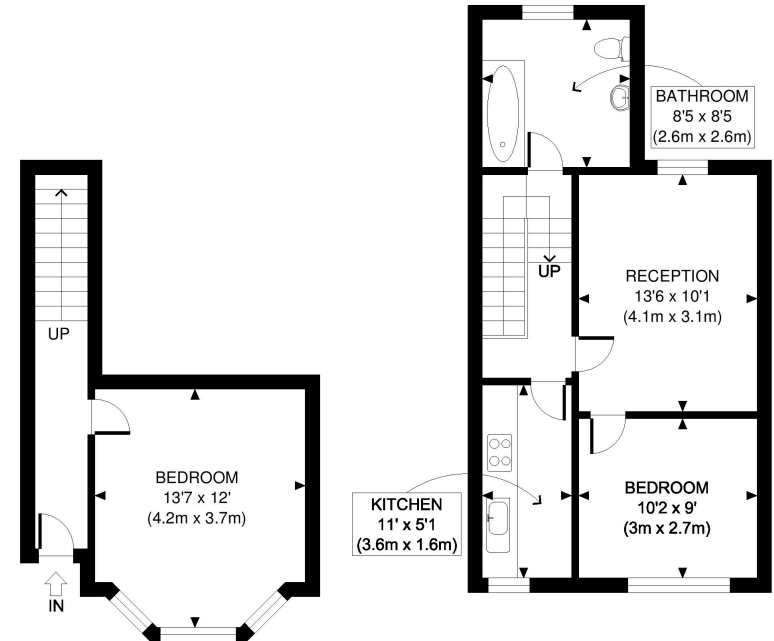
📍 25 Roman Road, Bethnal Green, London, E2 0HU

📍 29th Floor, One Canada Square, Canary Wharf, London, E14 5DY

© 2024 Estateology Company registration no. 9628198. Registered office: 555-557 Cranbrook Road, Gants Hill, Ilford, Essex, IG2 6HE

We have prepared these property particulars as a general guide to a broad description of the property. They are not intended to constitute part of an offer or contract. We have not carried out a structural survey and the services, appliances and specific fittings have not been tested. All photographs, measurements, floorplans and distances referred to are given as a guide only and should not be relied upon for the purchase of carpets or any other fixtures or fittings. Lease details, service charges and ground rent (where applicable) and council tax are given as a guide only and should be checked and confirmed by your Solicitor prior to exchange of contracts. The copyright of all details, photographs and floorplans remain exclusive to Estateology.

Barking Road, E13



GROUND FLOOR
GROSS INTERNAL
FLOOR AREA 219 SQ FT

FIRST FLOOR
GROSS INTERNAL
FLOOR AREA 435 SQ FT

APPROX. GROSS INTERNAL FLOOR AREA 654 SQ FT / 61 SQM

Ref:

Copyright **Lumieredigital**

Disclaimer: Floor plan measurements are approximate and are for illustrative purposes only. While we do not doubt the floor plan accuracy and completeness, you or your advisors should conduct a careful, independent investigation of the property in respect of monetary valuation